

WAAS CH <b>49100</b> <b>W19A</b>	APP CRS <b>187°</b>	Rwy Idg <b>8300</b> TDZE <b>26</b> Apt Elev <b>26</b>
--	------------------------	---

RNAV (GPS) Z RWY 19L

TAMPA INTL (TPA)

⚠

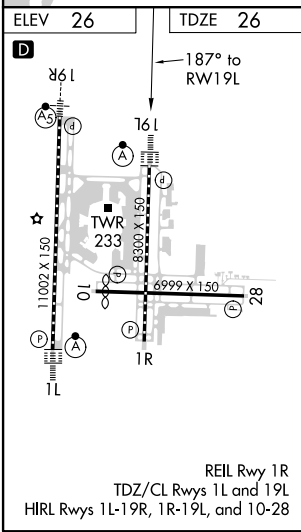
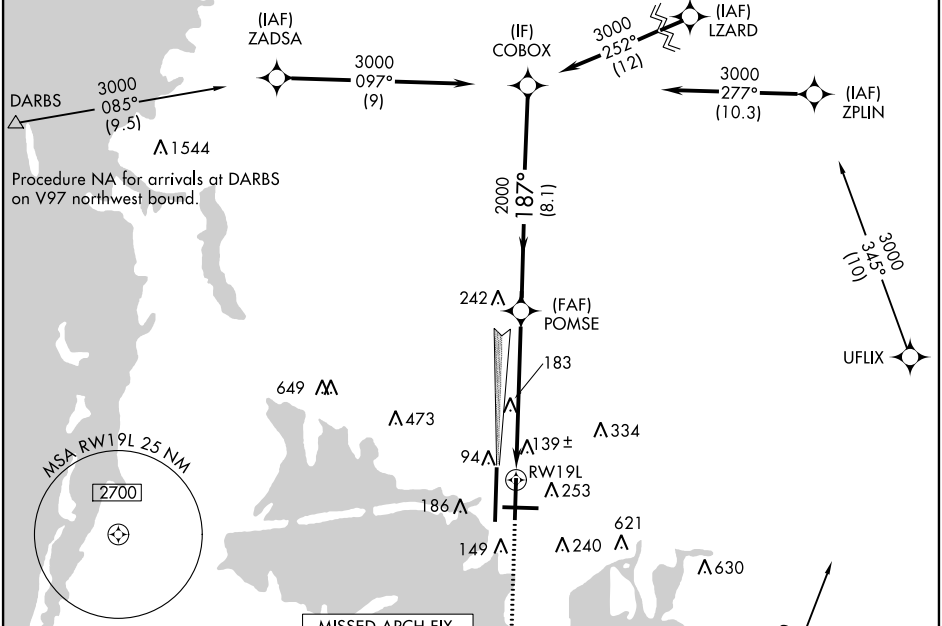
For uncompensated Baro-VNAV systems, LNAV/VNAV NA below -15°C (5°F) or above 43°C (109°F). DME/DME RNP-0.3 NA. Simultaneous approach authorized with Rwy 19R. LNAV procedure NA during simultaneous operations. Use of FD or AP providing RNAV track guidance required during simultaneous operations. \*\* RVR 1800 authorized with use of FD or AP or HUD to DA.

ALSF-2

MISSED APPROACH:

Climb to 2800 direct CUPUL and on track 147° to GIBBS and hold.

ARR <b>126.45</b>	D-ATIS	DEP <b>128.475</b>	TAMPA APP CON <b>118.5 307.175</b>	TAMPA TOWER <b>119.5 269.4</b>	GND CON <b>121.7 269.4</b>	CLNC DEL <b>133.6</b>	CPDLC
-------------------	--------	--------------------	------------------------------------	--------------------------------	----------------------------	-----------------------	-------



2800 CUPUL				GIBBS				VGSi and RNAV glidepath not coincident (VGSi Angle 3.00/TCH 61).				Procedure Turn NA			
↑				tr 147°				POMSE				COBOX			
*LNAV only.				*1.2 NM to RWY19L				2000				187°			
RWY19L				1.2 NM				4.9 NM				8.1 NM			
CATEGORY				A				B				C			
LPV DA**				226/24				200 (200-½)							
LNAV/VNAV DA				440/45				414 (500-¾)							
LNAV MDA				460/24				434 (500-½)				460/40			
												434 (500-¾)			
												680-1¾			
												980-3			
CIRCLING				560-1				534 (600-1)				654 (700-1¾)			
												954 (1000-3)			

SE-3, 03 DEC 2020 to 31 DEC 2020

SE-3, 03 DEC 2020 to 31 DEC 2020