

LOC I-TPA 110.3	APP CRS 187°	Rwy ldg 8300 TDZE 26 Apt Elev 26
---------------------------	------------------------	---

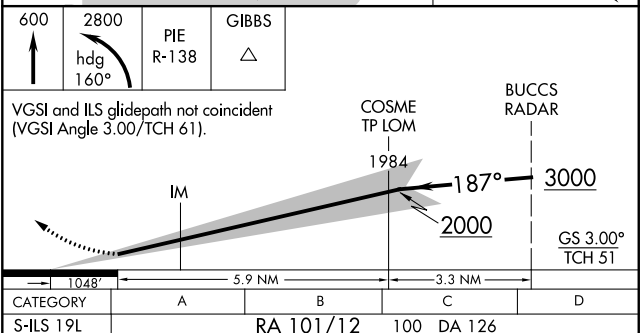
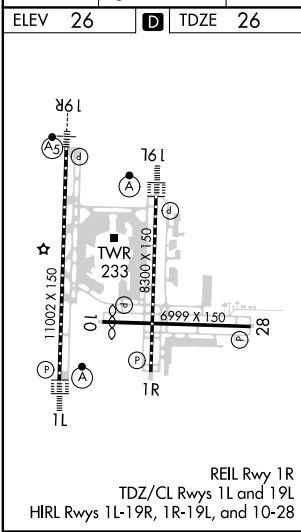
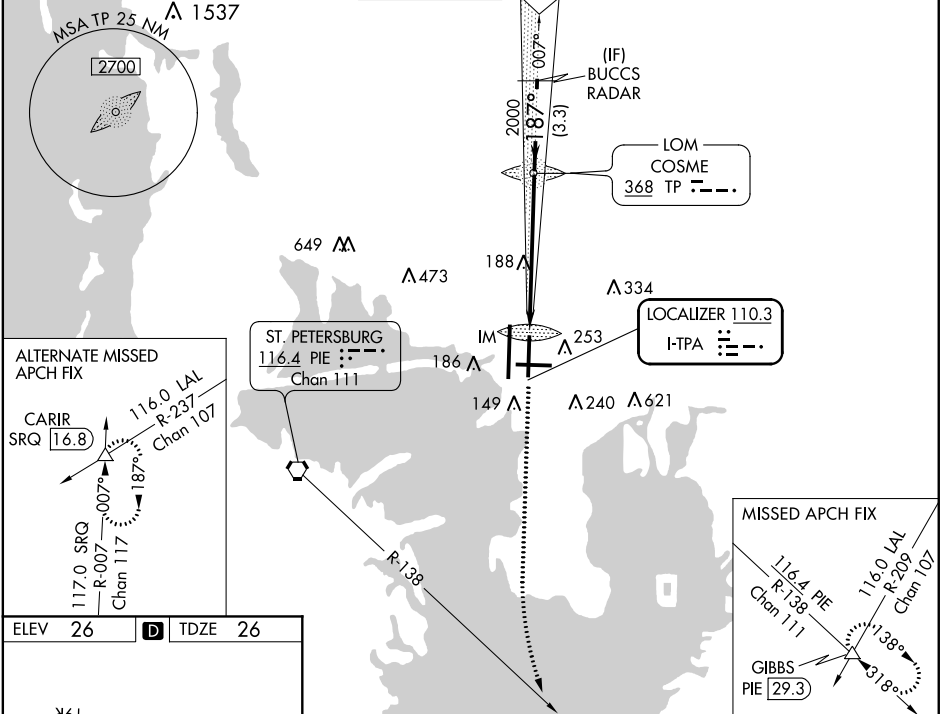
ILS RWY 19L (CAT II)
TAMPA INTL (TPA)

Simultaneous approach authorized. RADAR required.
RVR 1000 authorized with specific OPSPEC, MSPEC,
or LOA approval and use of autoland or HUD to
touchdown.

ALSIF-2

MISSED APPROACH: Climb to 600 then climbing
left turn to 2800 on heading 160° and on PIE
VORTAC R-138 to GIBBS INT/PIE 29.3 DME
and hold.

ARR 126.45	D-ATIS 128.475	DEP 118.5 307.175	TAMPA APP CON 119.5 269.4	TAMPA TOWER 121.7 269.4	GND CON 133.6	CLNC DEL CPDLC
----------------------	--------------------------	-----------------------------	-------------------------------------	-----------------------------------	-------------------------	--------------------------



CATEGORY	A	B	C	D
S-ILS 19L	RA 101/12	100	DA 126	

**CATEGORY II ILS - SPECIAL AIRCREW
& AIRCRAFT CERTIFICATION REQUIRED**

SE-3, 03 DEC 2020 to 31 DEC 2020

SE-3, 03 DEC 2020 to 31 DEC 2020