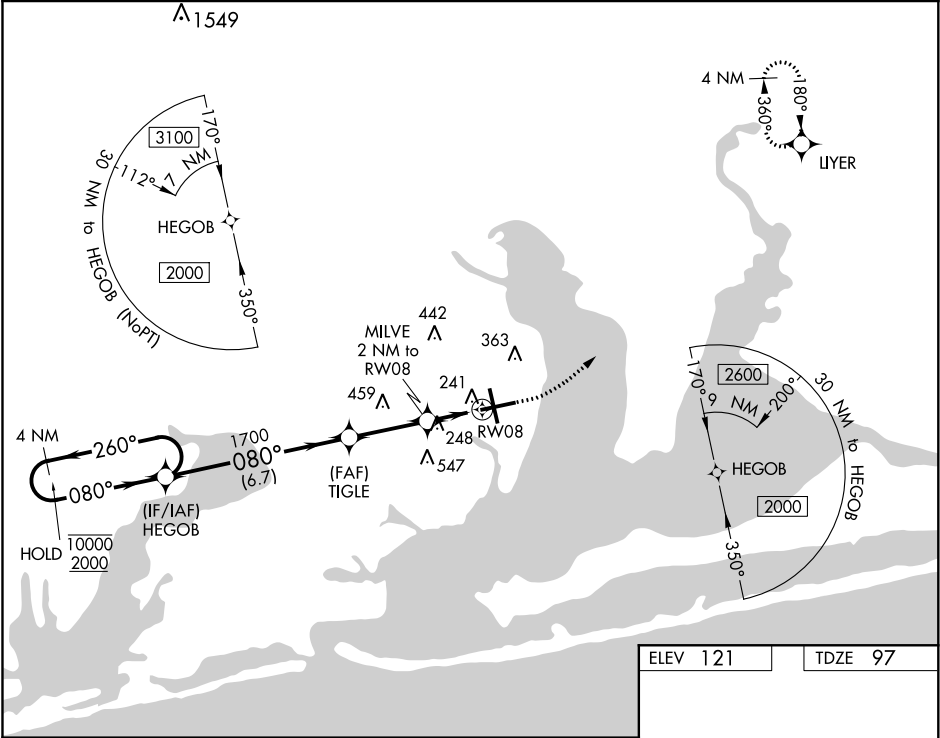


WAAS CH 86219 W08A	APP CRS 080°	Rwy Idg TDZE 97 Apt Elev 121
--	------------------------	--

RNAV (GPS) RWY 8
PENSACOLA INTL (PNS)

RNP APCH. ▼ Rwy 8 helicopter visibility reduction below ¾ SM NA. For uncompensated Baro-VNAV systems, LNAV/VNAV NA below 1°C or above 54°C. CAUTION: Intensive VFR student training in vicinity of airport.	MISSED APPROACH: Climb to 600 then climbing left turn to 2200 direct LIYER and hold.
---	--

ATIS 121.25	PENSACOLA APP CON 119.0 269.375	PENSACOLA TOWER ★ 119.9 (CTAF) 0 257.8	GND CON 121.9 348.6	CLNC DEL 123.725 256.875	UNICOM 122.95
-----------------------	---	--	-------------------------------	------------------------------------	-------------------------



4 NM Holding Pattern HEGOB		ELEV 121 TDZE 97	
10000 2000 GP 3.00° TCH 55		600 2200 LIYER	
260° 080° 080° 1700		*LNAV only.	
TIGLE 1700		MILVE 2 NM to RW08	
6.7 NM 2.9 NM 0.7 NM 1.3 NM		*1.3 NM to RW08	
CATEGORY A B C D		RW08	
LPV DA		347-1 250 (300-1)	
LNAV/VNAV DA		402-1 305 (300-1)	
LNAV MDA		560-1 463 (500-1) 560-1 463 (500-1 3/8)	
CIRCLING		580-1 459 (500-1) 680-1 559 (600-1) 680-1 559 (600-1 1/2) 680-2 559 (600-2)	
PENSACOLA, FLORIDA		PENSACOLA INTL (PNS)	
Amdt 2E 10OCT19		RNAV (GPS) RWY 8	