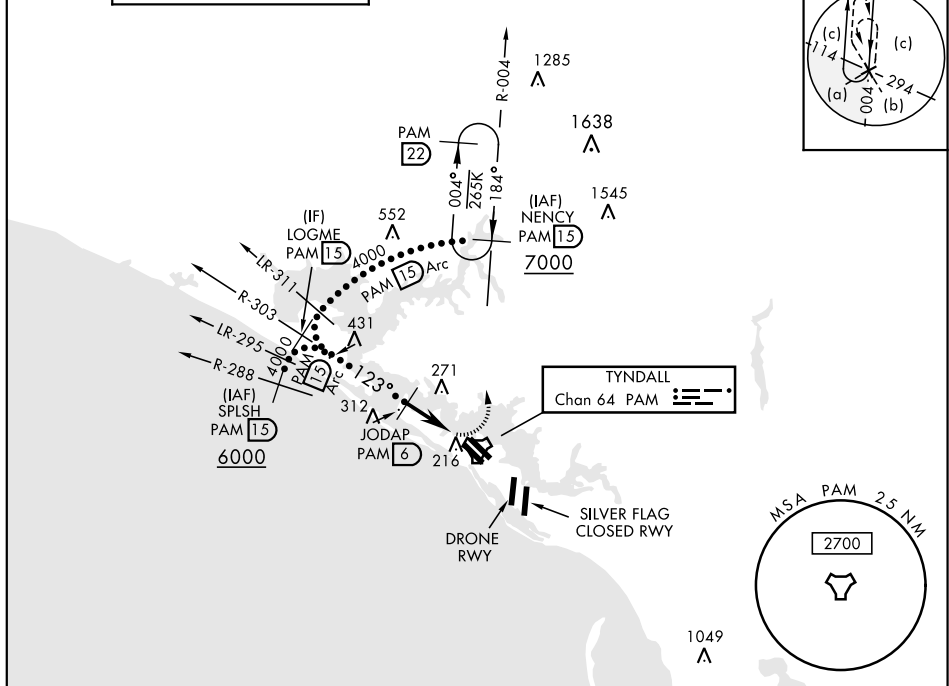


HI-TACAN Y RWY 14R

TACAN PAM Chan 64	APCH CRS 123°	Rwy ldg 10,113 TDZE 15 Arpt Elev 17	JAL-312 [USAF]	TYNDALL AFB (KPAM)
-----------------------------	-------------------------	--	----------------	--------------------

MISSED APPROACH: Climbing left turn to 3000, intercept PAM TACAN R-004 to 15 DME (NENCY) and hold.

ATIS ★ 254.4	TYNDALL APP CON 125.2 392.1 (N abv 5000') 120.825 379.3 (N blw 5000') 124.15 338.35 (S abv 5000') 119.775 317.45 (S blw 5000')	TYNDALL TOWER ★ 133.95 263.15	GND CON 121.9 259.3	CLNC DEL 118.05 348.7	ASR/PAR
------------------------	--	---	-------------------------------	---------------------------------	---------



EMERG SAFE ALT 100 NM 3300

LOGME 15	VGSI and descent angles not coincident (VGSI Angle 2.50/TCH 36)	3000 PAM R-004	NENCY PAM 15	ELEV 17	TDZE 15
4000	JODAP 6	SAATA 1.3	TACAN	123° to TACAN	HIRL all Rwy Rwy 32L ldg 9135'
2.82° TCH 36	1600	2.4	4.7 NM	5 NM	10.113-150
CATEGORY	C	D	E		
S-14R	480-1 $\frac{3}{8}$	465	(500-1 $\frac{3}{8}$)		
CIRCLING	560-1 $\frac{1}{2}$ 543 (600-1 $\frac{1}{2}$)	580-2 563 (600-2)	620-2 $\frac{1}{4}$ 603 (700-2 $\frac{1}{4}$)		Recommend Rwy 14L-32R for apch end engagement of A-Gear.

HI-TACAN Y RWY 14R