

## HI-TACAN Y RWY 14L

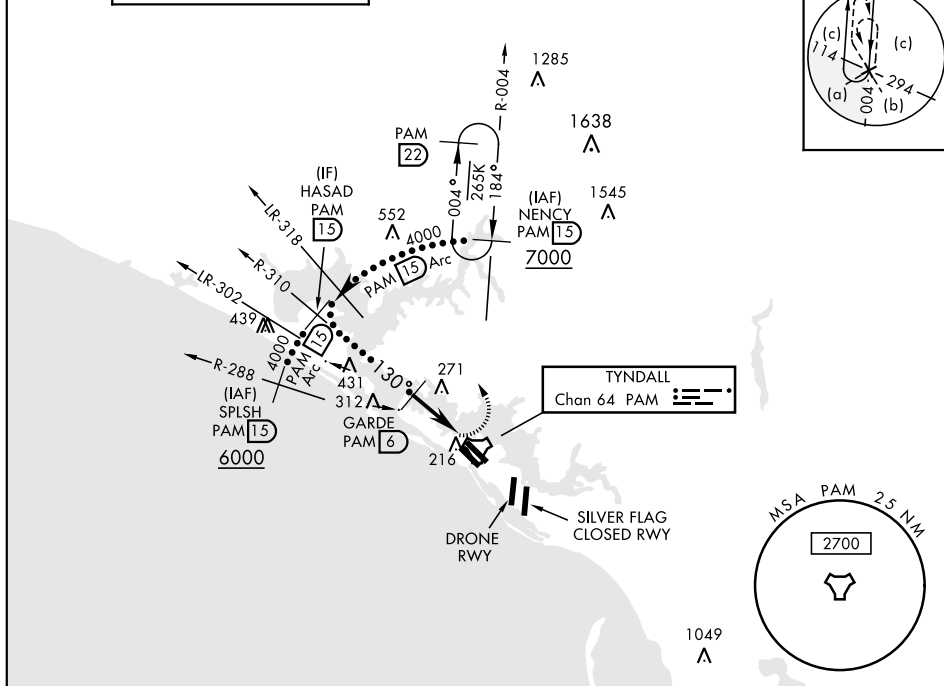
TACAN PAM Chan <b>64</b>	APCH CRS <b>130°</b>	Rwy ldg <b>10,008</b> TDZE <b>14</b> Arpt Elev <b>17</b>
-----------------------------	-------------------------	--

JAL-312 [USAF]

TYNDALL AFB (KPAM)

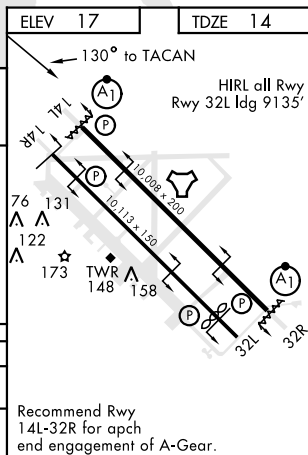
<b>V</b> * When ALS inop, increase vis to 1½ miles.	ALSF-1 	MISSED APPROACH: Turn left climbing to 3000, intercept PAM TACAN R-004 to 15 DME (NENCY) and hold.
--	------------	--

ATIS ★ <b>254.4</b>	TYNDALL APP CON <b>125.2 392.1</b> (N abv 5000') <b>120.825 379.3</b> (N blw 5000') <b>124.15 338.35</b> (S abv 5000') <b>119.775 317.45</b> (S blw 5000')	TYNDALL TOWER ★ <b>133.95 263.15</b>	GND CON <b>121.9 259.3</b>	CLNC DEL <b>118.05 348.7</b>	ASR/PAR
------------------------	--	---	-------------------------------	---------------------------------	---------



EMERG SAFE ALT 100 NM 3300

CATEGORY S-14L* CIRCLING	HASAD (PAM 15) 4000 2.74° TCH 49		VGSI and descent angles not coincident (VGSI Angle 2.50/TCH 49)		NENCY PAM 15 3000 PAM R-004
	GARDE (PAM 6) 1600 2.3 1.2 4.8 NM .5 NM		WEGAP 2.3 1.2		TACAN
	C 480/50		D 466 (500-1)		E 620-2¼ 603 (700-2¼)



Recommend Rwy 14L-32R for apch end engagement of A-Gear.

## HI-TACAN Y RWY 14L