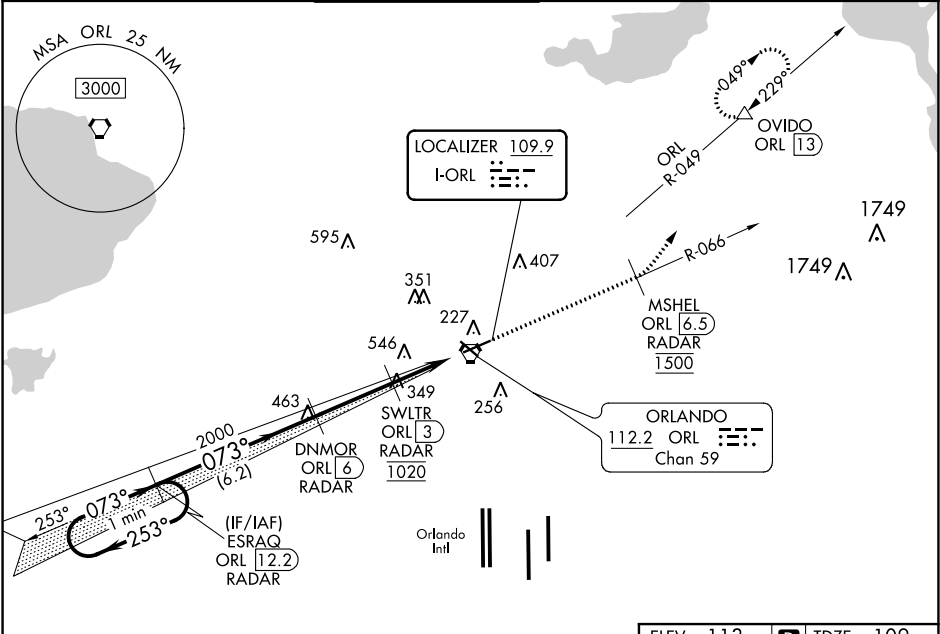


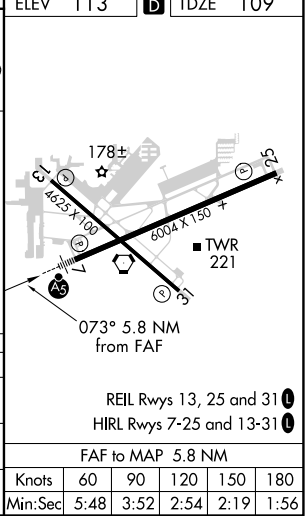
LOC I-ORL	APP CRS	Rwy Idg	5704
109.9	073°	TDZE	109
		Apt Elev	113

ILS or LOC RWY 7
EXECUTIVE (ORL)

RADAR required for procedure entry. DME or RADAR required.				MISSED APPROACH: Climb on ORL VORTAC R-066 to cross MSHEL/ORL 6.5 DME/RADAR at 1500 then climbing left turn to 1600 on heading 020° and ORL VORTAC R-049 to OVIDO/ORL 13 DME and hold.	
ATIS	ORLANDO APP CON	EXECUTIVE TOWER ★	GND CON	CLNC DEL	UNICOM
127.25	124.8 351.9	118.7 (CTAF) 0 239.0	121.4 239.0	128.45	122.95



ELEV 113 D TDZE 109				
ORL R-066 MSHEL ORL 6.5 RADAR 1500				
hdg 020° ORL R-049 OVIDO ORL 13				
*LOC only.				
ESRAQ ORL 12.2 RADAR				
DNMR ORL 6 RADAR				
SWLTR ORL 3 RADAR				
ORL VORTAC ORL 0.2				
GS 3.00° TCH 52				
2000 ← 253° 073° → 2000				
6.2 NM 3 NM 2.8 NM				
CATEGORY	A	B	C	D
S-ILS 7	391/40 282 (300-¾)			
S-LOC 7	660/40	551 (600-¾)	660/60	551 (600-1¼)
CIRCLING	660-1 547 (600-1)	680-1 567 (600-1)	860-2¼ 747 (800-2¼)	860-2½ 747 (800-2½)



SE-3, 03 DEC 2020 to 31 DEC 2020

SE-3, 03 DEC 2020 to 31 DEC 2020