

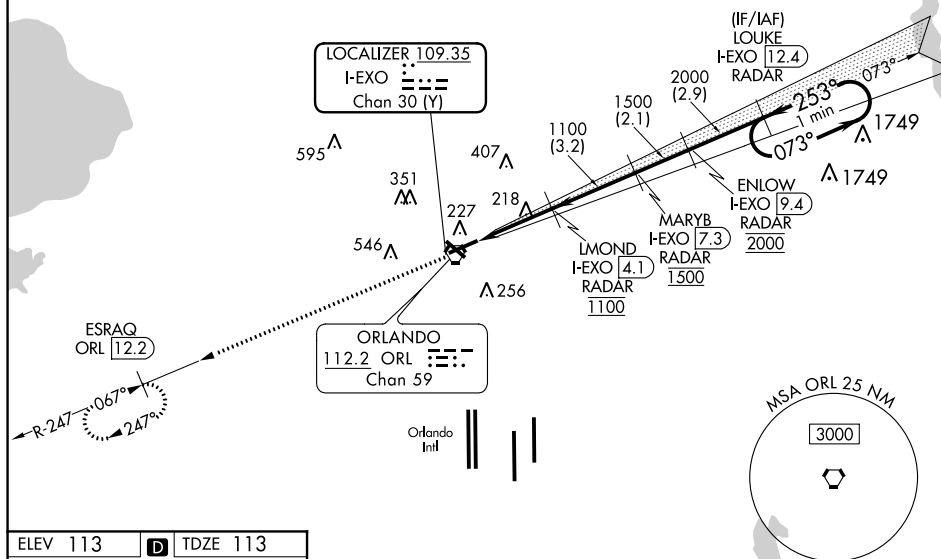
ILS or LOC RWY 25
EXECUTIVE (ORL)

T Circling Rwy 31 NA at night. In minimum visibility conditions, bright lights on
A highway ½ mile south of airport may be mistaken for runway lights.

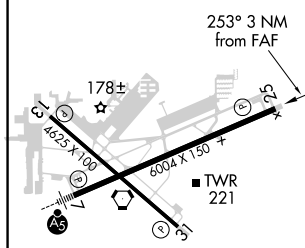
MISSED APPROACH: Climb to 2000 on
ORL VORTAC R-247 to ESRAQ/ORL
VORTAC 12.2 DME and hold.

ATIS 127.25	ORLANDO APP CON 124.8 351.9	EXECUTIVE TOWER ★ 118.7(CTAF) 0 239.0	GND CON 121.4 239.0	CLNC DEL 128.45	UNICOM 122.95
----------------	--------------------------------	--	------------------------	--------------------	------------------

RADAR REQUIRED



ELEV 113	D	TDZE 113
----------	----------	----------



REIL Rwy 13, 25 and 31 **L**
HRL Rwy 7-25 and 13-31 **L**

FAF to MAP 3 NM

Knots	60	90	120	150	180
Min:Sec	3:00	2:00	1:30	1:12	1:00

[illegible]