


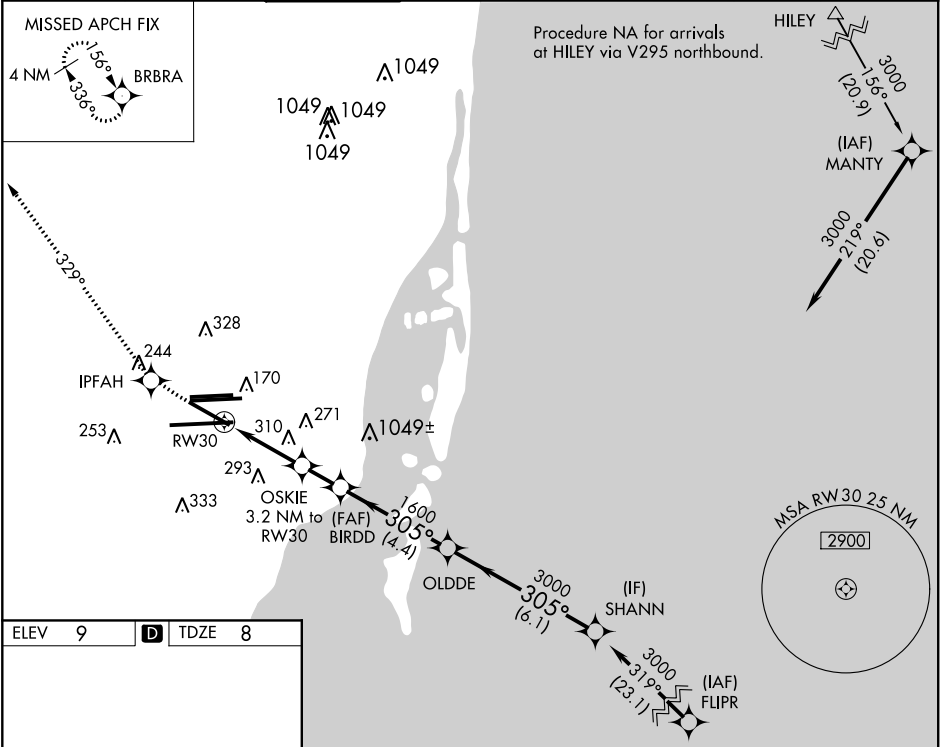


WAAS CH <b>40105</b> <b>W30A</b>	APP CRS <b>305°</b>	Rwy Idg TDZE Apt Elev	<b>7913</b> <b>8</b> <b>9</b>
--	------------------------	-----------------------------	-------------------------------------

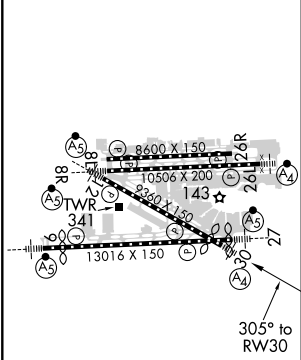
RNAV (GPS) Z RWY 30  
MIAMI INTL (MIA)

  Inoperative table does not apply to LNAV Cat C and D. DME/DME RNP-0.3 NA	MALS 	MISSED APPROACH: Climb to 3000 direct IPFAH and via 329° track to BRBRA and hold.
--	---	--

D-ATIS ARR <b>119.15</b> DEP <b>133.675</b>	MIAMI APP CON <b>124.85 322.3</b>	MIAMI TOWER <b>118.3 256.9</b>	<b>121.8</b> (8L/8R/12/26L/26R) <b>127.5</b> (9/27/30)	GND CON <b>348.6</b>	CLNC DEL <b>135.35</b>	CPDLC
---	--------------------------------------	-----------------------------------	---	-------------------------	---------------------------	-------



ELEV 9	<b>D</b>	TDZE 8
--------	----------	--------



TDZ/CL Rwy 8R  
REIL Rwy 8L and 26R  
HIRL all Rwy

3000	IPFAH	329° tr	BRBRA	VGSI and LPV glidepath not coincident (VGSI Angle 3.00/TCH 71).	Procedure Turn NA
*LNAV only.					
	RW30	OSKIE 3.2 NM to RW30	BIRDD	OLDDE	SHANN
	*1.5 NM to RW30		*1080	305°	3000
	1.5 NM	1.7 NM	1.6 NM	4.4 NM	6.1 NM
CATEGORY	A	B	C	D	
LPV DA	285/50 277 (300-1)				
LNAV MDA	560/40	552 (600-¾)	560-1½ 552 (600-1½)	560-1¾ 552 (600-1¾)	GP 3.00° TCH 51