

19115

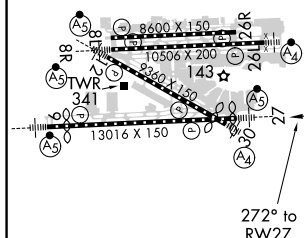
RNAV (RNP) Y RWY 27
MIAMI INTL (MIA)

MALSR




MISSED APPROACH: Climb to 2000
direct TUHWU and on track 342°
to BRBRA and hold.

ARR	D-ATIS	MIAMI APP CON		MIAMI TOWER		GND CON		CNLC DEL	CPDLC
DEP	119.15 133.675	124.85	322.3	118.3	256.9	121.8 127.5	(8L/8R/12/26L/26R) (9/27/30) 348.6	135.35	

ELEV	9	D	TDZE	8
------	---	----------	------	---



TDZ/CL Rwy 8R
REIL Rwy 8L and 26R
HIRL all Rwy

2000	TUHWU	tr 342°	BRBRA
			

VGSI and RNAV glidepath not coincident (VGSI Angle 3.00/TCH 71).

SARCO HENDN

CHHAZ 1700

RW27

272°

3000

273°

3000

GP 3.00°
TCH 55

5.1 NM

4.1 NM

4.8 NM

CATEGORY	A	B	C	D	E
RNP 0.11 DA		336/30	328 (400-5%)		
RNP 0.30 DA		408/45	400 (400-7%)		

AUTHORIZATION REQUIRED

MIAMI INTL (MIA)

RNAV (RNP) Y RWY 27

SE-3, 03 DEC 2020 to 31 DEC 2020