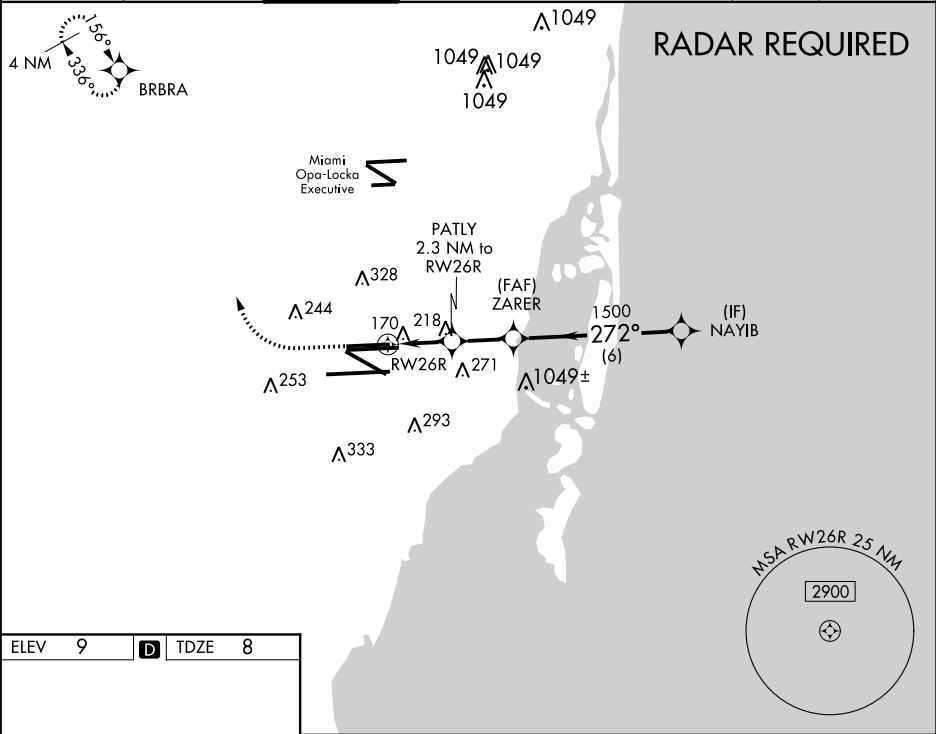


WAAS CH <b>86903</b> W26A	APP CRS <b>272°</b>	Rwy Idg <b>8600</b> TDZE <b>8</b> Apt Elev <b>9</b>	<b>RNAV (GPS) RWY 26R</b> MIAMI INTL (MIA)
---------------------------------	------------------------	---	---

**⚠** For uncompensated Baro-VNAV systems, LNAV/VNAV NA below 6°C (43°F) or above 54°C (130°F). Simultaneous approach authorized with ILS or LOC RWY 27. DME/DME RNP-0.3 NA. LNAV procedure NA during simultaneous operations. Use of FD or AP providing RNAV track guidance required during simultaneous operations.

**MISSED APPROACH:** Climb to 800 then climbing right turn to 3000 direct BRBRA and hold.

D-ATIS ARR <b>119.15</b> DEP <b>133.675</b>	MIAMI APP CON <b>124.85 322.3</b>	MIAMI TOWER <b>118.3 256.9</b>	GND CON <b>121.8</b> (8L/8R/12/26L/26R) <b>127.5</b> (9/27/30)	<b>348.6</b>	CLNC DEL <b>135.35</b>	CPDLC
---	--------------------------------------	-----------------------------------	--	--------------	---------------------------	-------



ELEV <b>9</b>	<b>D</b>	TDZE <b>8</b>
<b>272° to RWY 26R</b>		
<b>800</b> <b>3000</b> <b>BRBRA</b>		
<b>*LNAV only.</b>		
<b>PATLY</b> 2.3 NM to RWY 26R		
<b>*1.3 NM to RWY 26R</b>		
<b>RWY 26R</b> <b>*800</b> <b>1500</b> <b>272°</b> <b>3000</b>		
<b>NAYIB</b>		
<b>GP 3.00°</b> <b>TCH 60</b>		
<b>1.3</b> <b>1 NM</b> <b>2.2 NM</b> <b>6 NM</b>		
CATEGORY	A	B C D
LPV DA	265-3/4	257 (300-3/4)
LNAV/VNAV DA	433-13/8	425 (500-13/8)
LNAV MDA	480-1 472 (500-1)	480-13/8 472 (500-13/8)