

KEY WEST, FLORIDA

RNAV (GPS) RWY 8

APCH CRS	Rwy Idg	10,001
079°	TDZE	4
	Arpt Elev	6

AL-214 (USN)

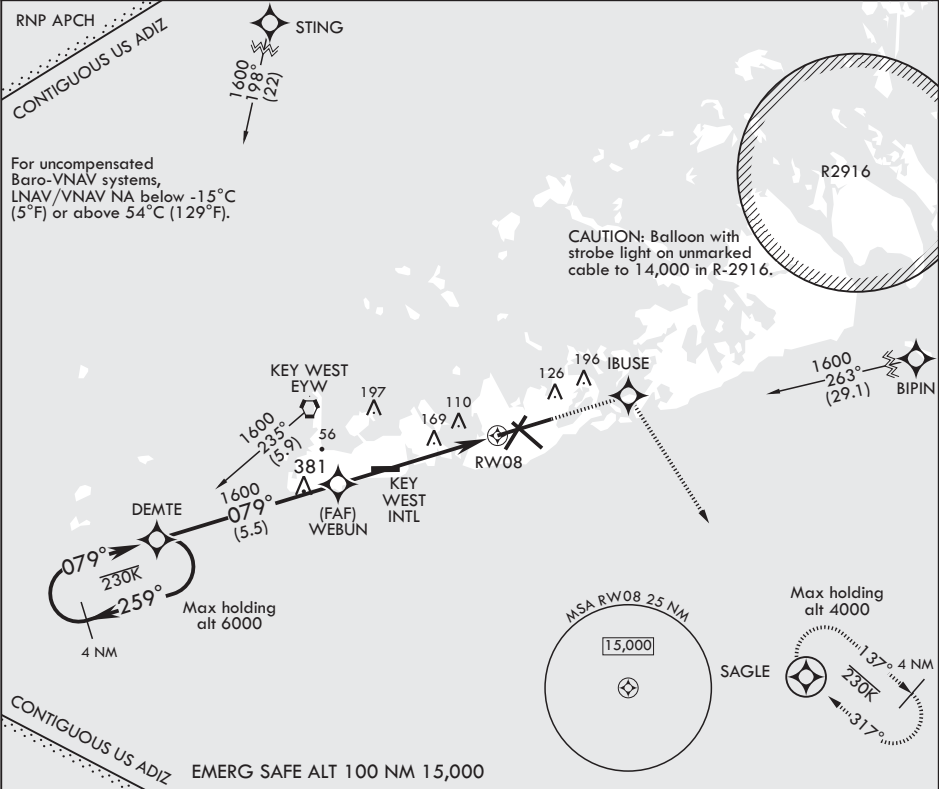
KEY WEST NAS (BOCA CHICA FLD) (KNQX)

▼ * When ALS inop, increase vis to 1 1/4 miles.
** When ALS inop, increase CAT AB vis to 1 mile, CAT CD vis to 1 3/8 miles.

ALSIF-1

MISSED APPROACH: (Do not exceed 230 KIAS until IBUSE) Climb to 1600 direct IBUSE, track 154° to SAGLE and hold, continue climb-in-hold to 1600.

ATIS★	APP CON	NAVY KEY WEST TOWER★	GND CON	CLNC DEL	ASR/PAR
307.025	124.025 313.7	118.575 340.25	121.7 336.45	121.2 357.4	



GP 3.00° TCH 45

DETE 1600 259° 079°

WEBUN 1600

1600 IBUSE tr 154°

ELEV 6 TDZE 4

1600

4.9 NM

127 22 10,001 x 200 47 x 200 7002 x 150 7001 x 150 079° to RW08

CATEGORY	A	B	C	D
LNAV/VNAV DA*	427-3/4		423	(500-3/4)
LNAV MDA**	460-1/2	456 (500-1/2)	460-7/8	456 (500-7/8)
CIRCLING	460-1	500-1	500-1 1/2	560-2
	454 (500-1)	494 (500-1)	494 (500-1 1/2)	554 (600-2)

HIRL all Rwy

KEY WEST, FLORIDA

24°34'N - 81°41'W

KEY WEST NAS (BOCA CHICA FLD) (KNQX)

RNAV (GPS) RWY 8

Amtdt 2 21MAY20

SE-3, 03 DEC 2020 to 31 DEC 2020

SE-3, 03 DEC 2020 to 31 DEC 2020