

RNAV (GPS) RWY 32

AL-214 (USN) KEY WEST NAS (BOCA CHICA FLD) (KNQX)

| | |
|------------------|---------------------------------------|
| APCH CRS 317° | Rwy Idg 7001 TDZE 4 Arpt Elev 6 |
|------------------|---------------------------------------|

T * When runways 14, 22 VGS1 inop, circling to runways 14, 22 not authorized at night.

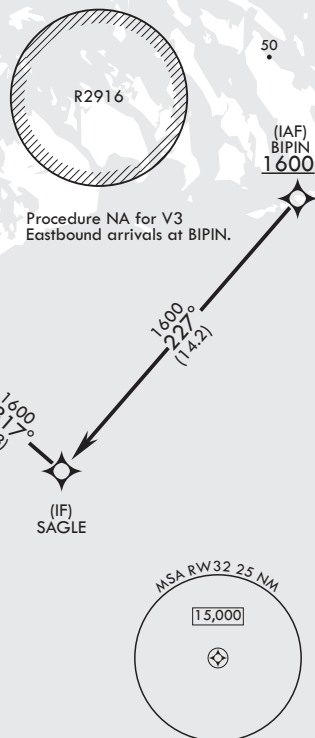
MISSED APPROACH: (Do not exceed 230 KIAS until PIBDE.) Climb to 1600 direct PIBDE, track 277° to SKIPP and hold, continue climb-in-hold to 1600.

| | | | | | |
|-------------------|--------------------------|---|-------------------------|-------------------------|---------|
| ATIS ★ 307.025 | APP CON 124.025 313.7 | NAVY KEY WEST TOWER ★ 118.575 340.25 | GND CON 121.7 336.45 | CLNC DEL 121.2 357.4 | ASR/PAR |
|-------------------|--------------------------|---|-------------------------|-------------------------|---------|

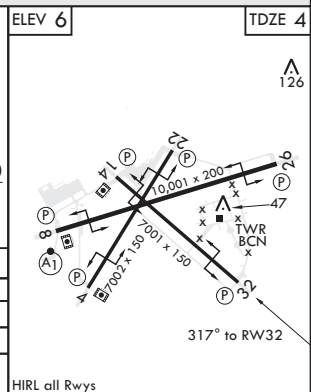
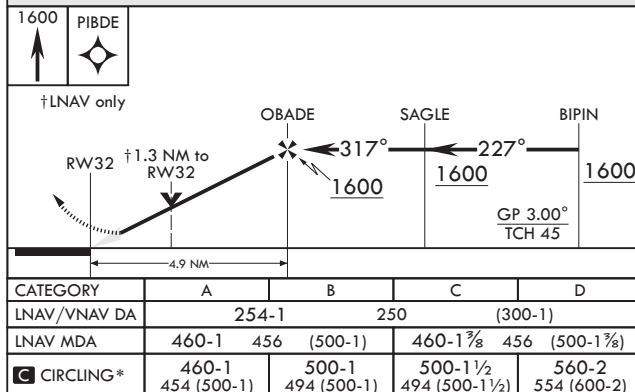
RNP APCH

For uncompensated
Baro-VNAV systems,
LNAV/VNAV NA below -15°C
(5°F) or above 43°C (111°F).

CAUTION: Balloon with strobe light on unmarked cable to 14,000 in R-2916.



EMERG SAFE ALT 100 NM 15,000



KEY WEST, FLORIDA

24°34'N - 81°41'W

KEY WEST NAS (BOCA CHICA FLD) (KNQX)

Amdt 1 21MAY20

RNAV (GPS) RWY 32