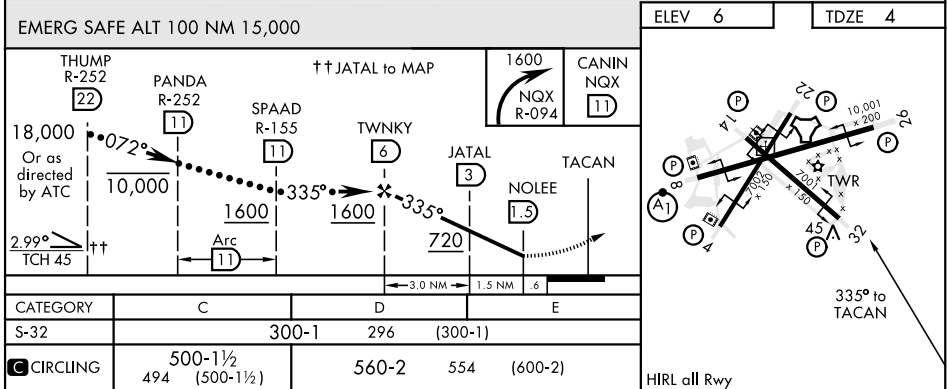
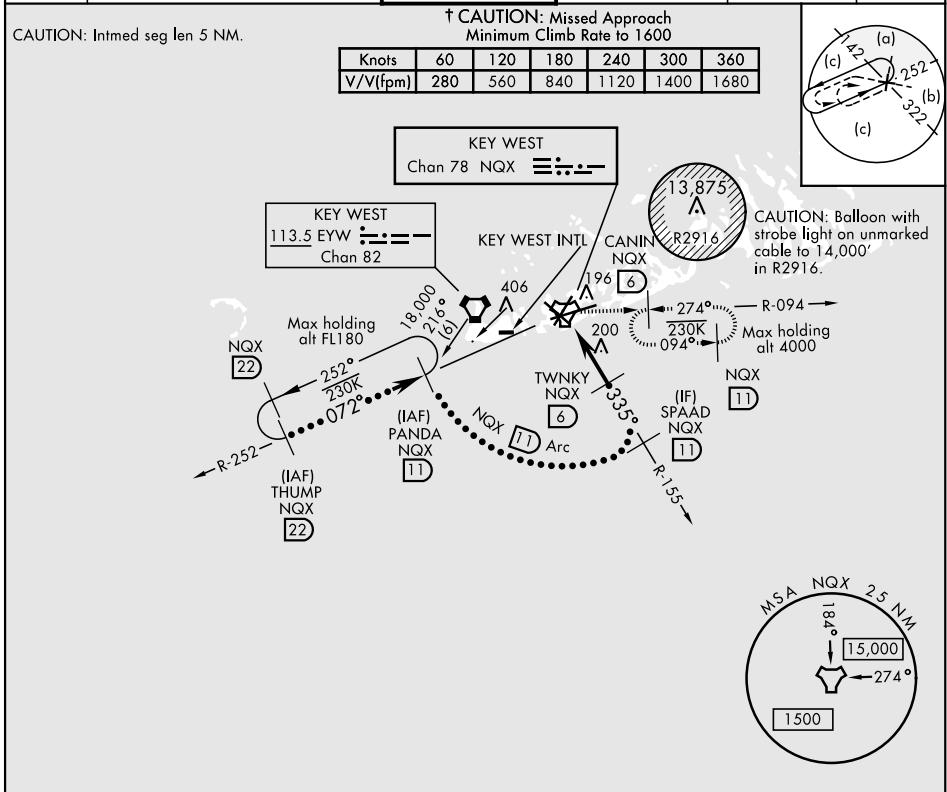


# HI-TACAN Z RWY 32

TACAN	NQX	APCH CRS	Rwy Idg	7001	JAL-214 [USN]	KEY WEST NAS (BOCA CHICA FLD)	(KNQX)
Chan	78	335°	TDZE	4			
			Arpt Elev	6			

† MISSED APPROACH: Climb to 1600 via NQX TACAN R-155 to NQX, then climbing right turn to intercept NQX R-094 to CANIN and hold.

ATIS ★	NAVY KEY WEST APP CON	NAVY KEY WEST TOWER ★	GND CON	CLNC DEL	ASR/PAR
307.025	124.025 313.7	118.575 340.25	121.7 336.45	121.2 357.4	



# HI-TACAN Z RWY 32