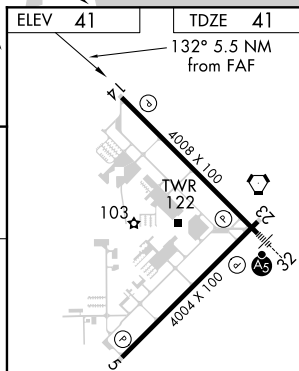
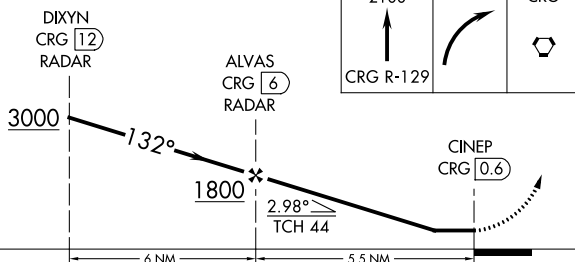
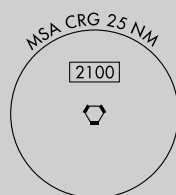
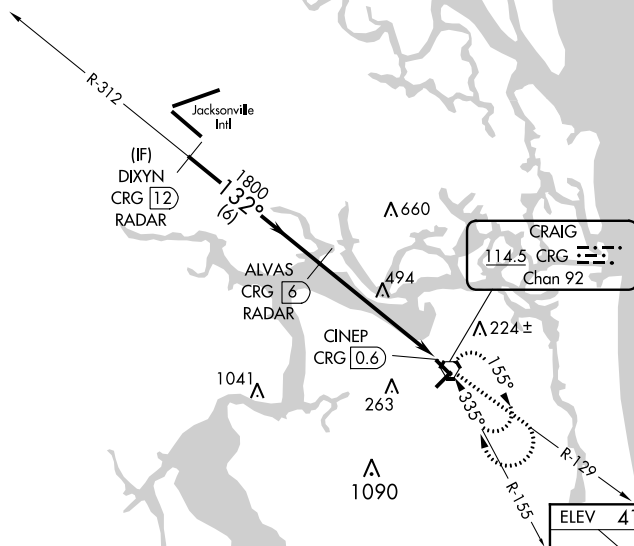





VOR RWY 14
JACKSONVILLE EXECUTIVE AT CRAIG (CRG)

MISSED APPROACH: Climb to 2100 via CRG VORTAC R-129 then right turn direct CRG VORTAC and hold.

RADAR REQUIRED



						MIRL Rwy 5-23 
						HIRL Rwy 14-32 
						REIL Rwy 14 and 23 
						FAF to MAP 5.5 NM
Knots	60	90	120	150	180	
Min:Sec	5:30	3:40	2:45	2:12	1:50	