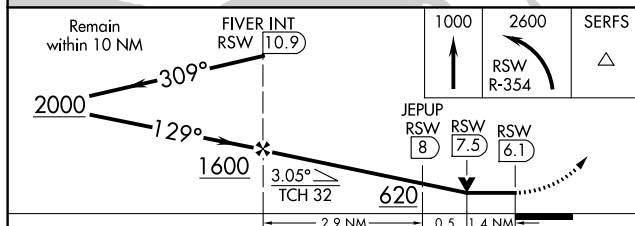
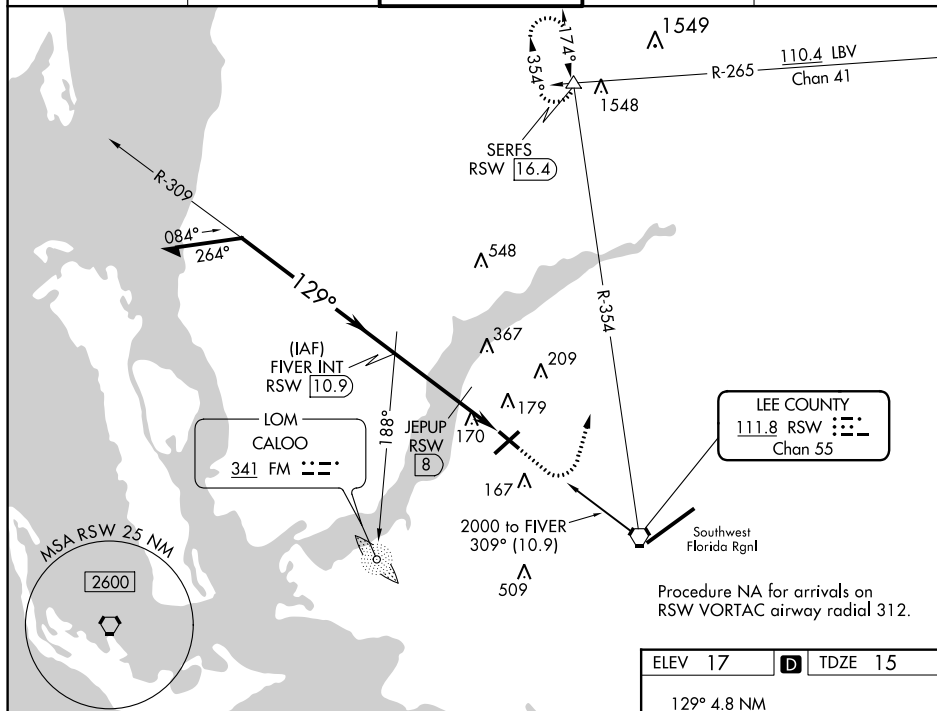


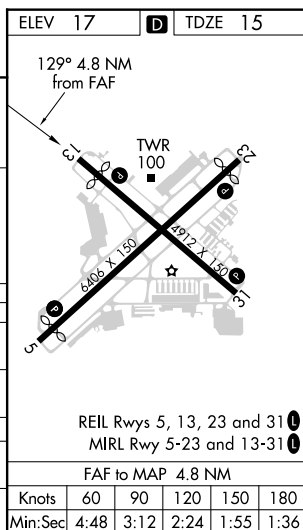
VOR RWY 13  
PAGE FIELD (FMY)

**MISSED APPROACH:** Climb to 1000 then climbing left turn to 2600 on RSW VORTAC R-354 to SERFS INT/RSW 16.4 DME and hold.

ATIS 123,725	FORT MYERS APP CON★ 126.8 306.2	PAGE TOWER★ 119.0 (CTAF) 0 306.95	GND CON 121.7	CLNC DEL 121.7
-----------------	------------------------------------	--------------------------------------	------------------	-------------------



CATEGORY	A	B	C	D
S-13	620-1	605 (700-1)	620-1 $\frac{3}{4}$	605 (700-1 $\frac{3}{4}$ )
<b>C</b> CIRCLING	620-1	603 (700-1)	620-1 $\frac{3}{4}$ 603 (700-1 $\frac{3}{4}$ )	680-2 663 (700-2)
JEPUP FIX MINIMUMS				
S-13	480-1	465 (500-1)	480-1 $\frac{3}{8}$	465 (500-1 $\frac{3}{8}$ )
<b>C</b> CIRCLING	540-1	523 (600-1)	600-1 $\frac{1}{2}$ 583 (600-1 $\frac{1}{2}$ )	680-2 663 (700-2)



SE-3, 03 DEC 2020 to 31 DEC 2020