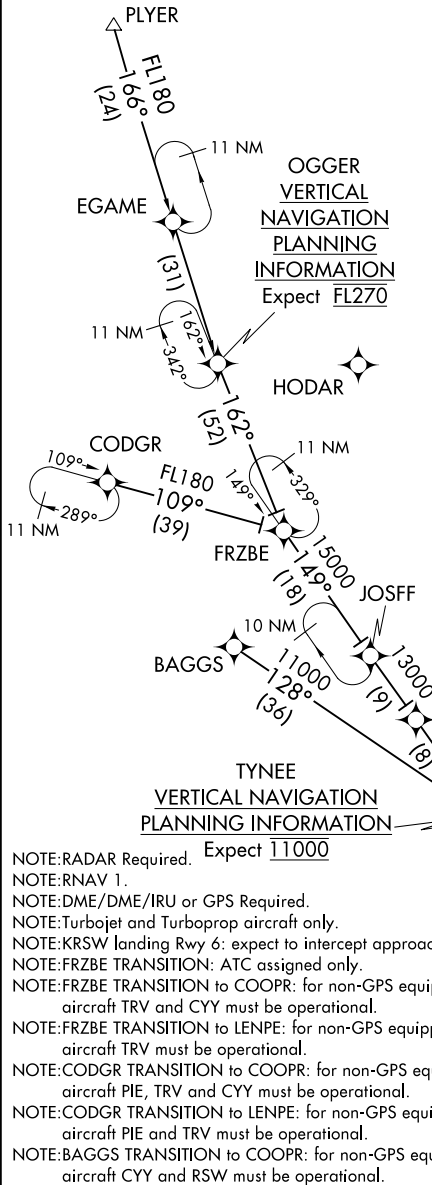


FORT MYERS APP CON *
125.15 306.2
FMY ATIS
123.725
RSW D-ATIS
124.65



ARRIVAL ROUTE DESCRIPTION

BAGGS TRANSITION (BAGGS.TYNEE2)
CODGR TRANSITION (CODGR.TYNEE2)
FRZBE TRANSITION (FRZBE.TYNEE2)
PLYER TRANSITION (PLYER.TYNEE2)

From TYNEE on track 149° to PASTR, thence....

....Landing KRSW Rwy 6: from PASTR on track 107° to LENPE, then on heading 107° or as assigned by ATC. Expect RADAR vectors to final approach course.

....Landing KRSW Rwy 24: from PASTR on track 129° to LLMER, then on track 086° to SPNKE, then on track 058° to COOPR, then on heading 058° or as assigned by ATC. Expect RADAR vectors to final approach course.

....Landing KFMY: from TYNEE on heading 149° or as assigned by ATC. Expect RADAR vectors to final approach course.

LOST COMMUNICATIONS:
KRSW landing Rwy 6: track to LENPE, intercept approach.
KRSW landing Rwy 24: track to COOPR, then proceed direct to NABAC, turn left to intercept Rwy 24 approach.

VERTICAL NAVIGATION PLANNING INFORMATION
Expect 5000

VERTICAL NAVIGATION PLANNING INFORMATION
Expect 4000

NOTE: Chart not to scale.