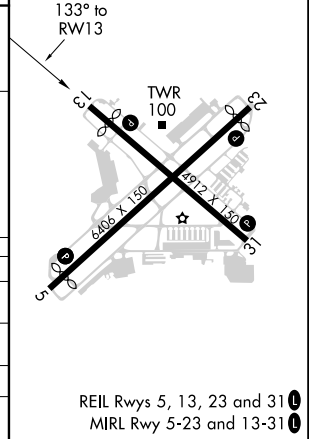
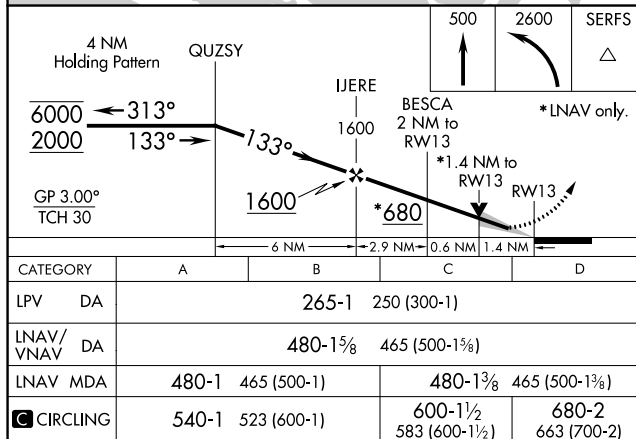
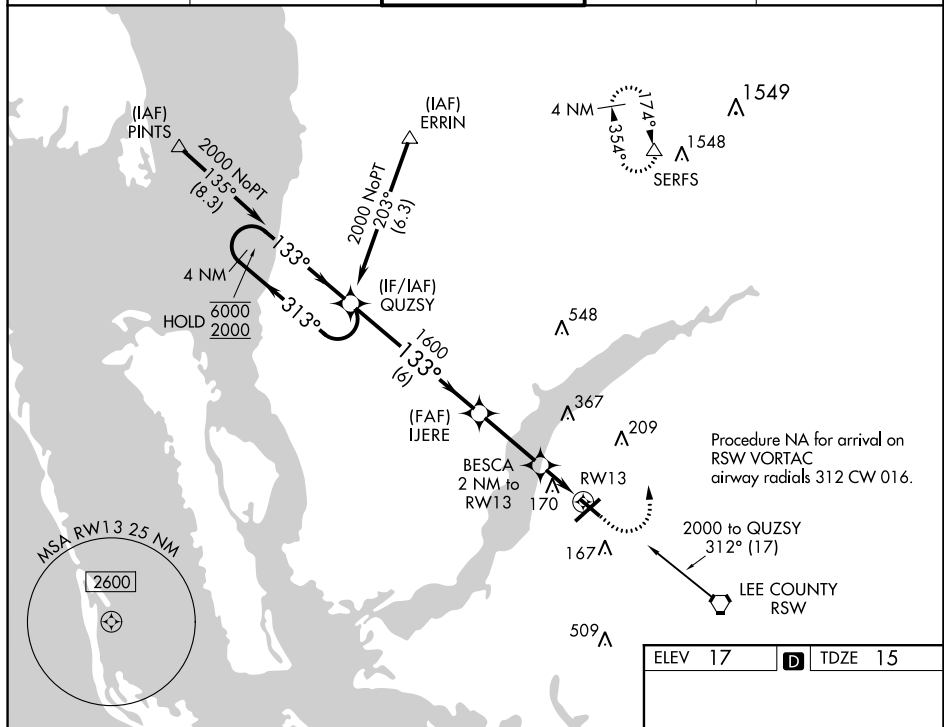


RNAV (GPS) RWY 13
PAGE FIELD (FMY)

T When Circling to Rwy 31 at night, operational VGSI required, remain on or above VGSI glidepath until threshold. For uncompensated Baro-VNAV systems. LNAV/VNAV NA below -15°C or above 54°C.

MISSED APPROACH: Climb to 500 then climbing left turn to 2600 direct SERFS and hold.

CLNC DEL
121.7

SE-3, 03 DEC 2020 to 31 DEC 2020