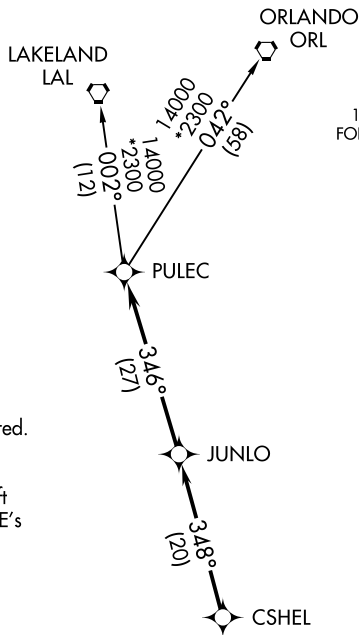


PAGE FIELD (FMY)
FORT MYERS, FLORIDA

CSHEL SIX DEPARTURE (RNAV)

TOP ALTITUDE:
2000



DO ATIS
123.725
CLNC DEL
121.7
GND CON
121.7
PAGE TOWER ★
119.0 (CTAF) 306.95
FORT MYERS DEP CON ★
126.8 306.2

- NOTE: RADAR required.
NOTE: DME/DME/IRU or GPS required.
NOTE: RNAV 1.
NOTE: For turbojet aircraft only.
NOTE: For non-GPS equipped aircraft
LAL, LBY, RSW, and SRQ DME's
must be operational.

TAKEOFF MINIMUMS

Rwys 5, 13, 23, 31: Standard.

NOTE: Chart not to scale.

DEPARTURE ROUTE DESCRIPTION

TAKEOFF ALL RWYS: Climb on assigned heading for RADAR vectors to CSHEL, then on depicted route to PULEC, thence. . . .

...on (transition). Maintain 2000, or as assigned by ATC, expect filed altitude/flight level 10 minutes after departure.

LAKELAND TRANSITION (CSHEL6.LAL)
ORLANDO TRANSITION (CSHEL6.ORK)

CSHEL SIX DEPARTURE (RNAV)
(CSHEL6.CSHEL) 03JAN19

FORT MYERS, FLORIDA
PAGE FIELD (FMY)

SE-3, 03 DEC 2020 to 31 DEC 2020