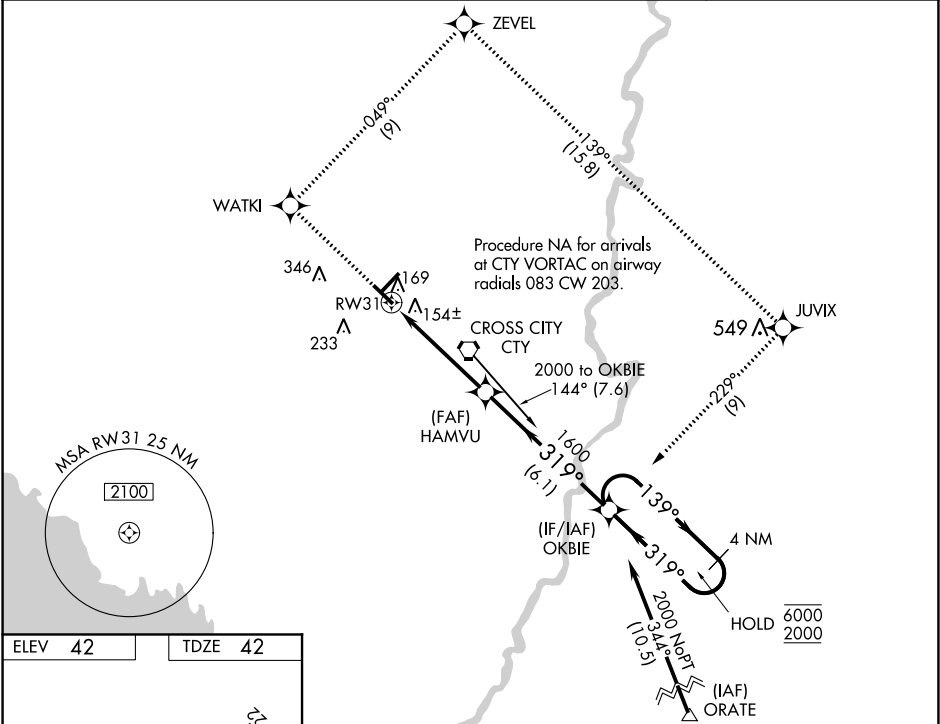


WAAS CH 45620 W31A	APP CRS 319°	Rwy Idg TDZE Apt Elev	5001 42 42
--	------------------------	-----------------------------	---------------------------------------

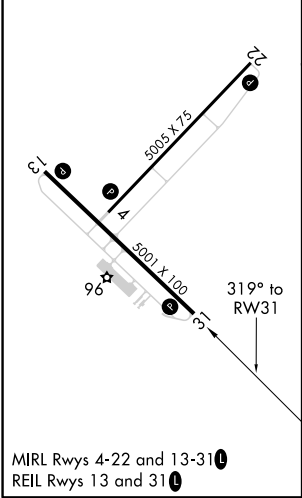
RNAV (GPS) RWY 31
CROSS CITY (CTY)

RNP APCH.	Procedure NA at night. Rwy 31 helicopter visibility reduction below 1 SM NA. Baro-VNAV NA. Use Williston altimeter setting; when not received, use NA Gainesville altimeter setting and increase all DA 25 feet and all MDA 40 feet.	MISSED APPROACH: Climb to 2000 direct WATKI and right turn on track 049° to ZEVEL and on track 139° to JUVIX and right turn on track 229° to OKBIE and hold.
-----------	--	---

AWOS-3PT 120.775	X60 AWOS-3T 118.425	JACKSONVILLE CENTER 127.8 352.0	UNICOM 122.8 (CTAF)
----------------------------	-------------------------------	---	-------------------------------



ELEV 42	TDZE 42
----------------	----------------



2000	WATKI	ZEVEL	tr 049°	JUVIX	tr 139°	OKBIE	tr 229°	4 NM Holding Pattern
VGSI and RNAV glidepath not coincident (VGSI Angle 3.00/TCH 36).								OKBIE
RW31								1600
4.7 NM								6.1 NM
CATEGORY	A	B	C	D				
LPV	DA	383-1¼			341 (400-1¼)			
LNAV/VNAV	DA	546-1¾			504 (600-1¾)			
LNAV MDA	580-1	538 (600-1)		580-1½	538 (600-1½)		580-1¾	538 (600-1¾)

SE-3, 03 DEC 2020 to 31 DEC 2020

SE-3, 03 DEC 2020 to 31 DEC 2020