

TACAN RWY 3

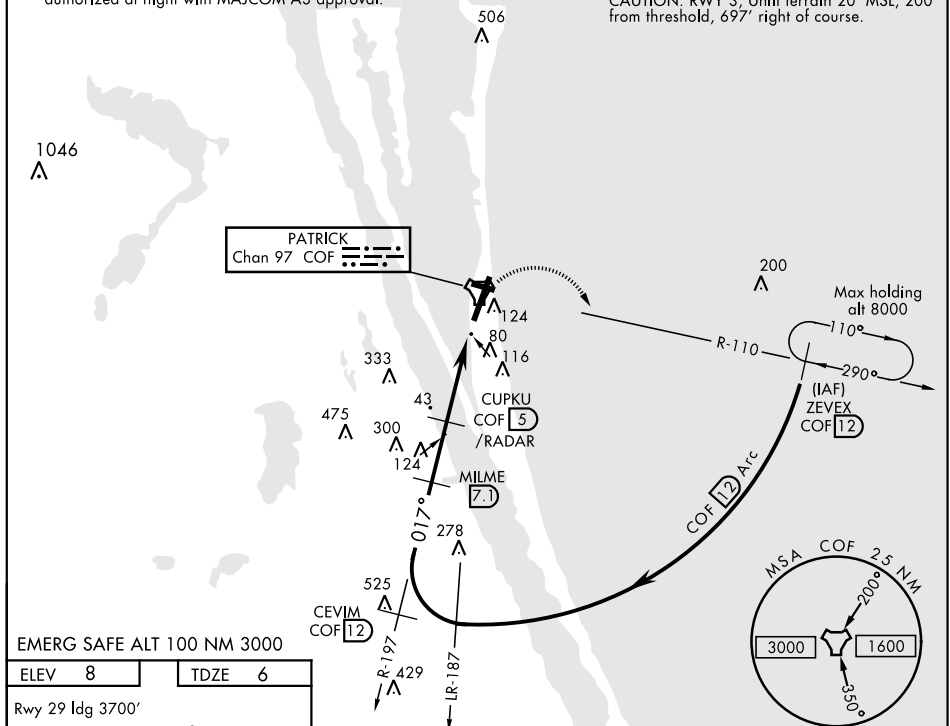
TACAN COF Chan 97	APCH CRS 017°	Rwy ldg TDZE Arpt Elev	9003 6 8	AL-38 [USAF]	PATRICK AFB (KCOF)
▼ * When ALS inop, increase CAT AB RVR to 55 and vis to 1 mile, CAT CD RVR to 60 and vis to 1½ miles. ** Circling NA W of Rwy 3/21.				ALSF-1 	† MISSED APPROACH: Climb to 800, then climbing right turn to 3000, intercept the COF R-110 outbound to ZEVEX and hold, continue climb in hold to 3000.

ATIS ★ 119.175 273.5	ORLANDO APP CON 132.65 281.425	PATRICK TOWER ★ 133.75 269.375	GND CON 124.35 335.8	CLNC DEL 118.4 289.4
-------------------------	-----------------------------------	-----------------------------------	-------------------------	-------------------------

** When RWY 29 VGSi inop, Circling to RWY 29 NA at night.
 When VGSi inop, procedure NA at night.
 USAF only: When VGSi inop, straight-in Rwy 3 authorized at night with MAJCOM A3 approval.

† Missed approach requires use of RNAV or ATC RADAR monitoring.

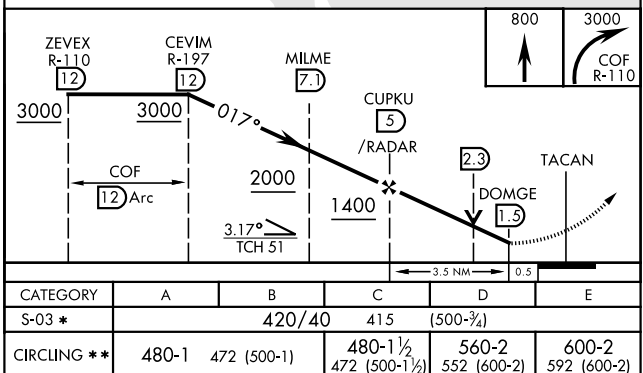
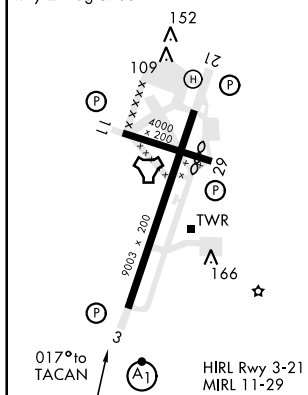
CAUTION: RWY 3, Unlit terrain 20' MSL, 200' from threshold, 697' right of course.



EMERG SAFE ALT 100 NM 3000

ELEV 8	TDZE 6
--------	--------

Rwy 29 ldg 3700'



CATEGORY	A	B	C	D	E
S-03 *	420/40		415	(500-¾)	
CIRCLING **	480-1	472 (500-1)	480-1½ 472 (500-1½)	560-2 552 (600-2)	600-2 592 (600-2)

TACAN RWY 3