

OCEAN FOUR DEPARTURE

SHL-38 [USAF]

PATRICK AFB (KCOF)

COCOA BEACH, FLORIDA

ATIS ★ 119.175 273.5
CLNC DEL
118.4 289.4
GND CON
124.35 335.8
PATRICK TOWER ★
133.75 269.375
ORLANDO DEP CON
132.65 281.425

ORMOND BEACH
112.6 OMN
Chan 73

L-21-23-24, H-5

ORLANDO
112.2 ORL
Chan 59

L-21-23-24, H-5

PATRICK
Chan 97 COF

L-24

(DME available on 115.0)

LAKELAND
116.0 LAL
Chan 107

L-21-24, H-5

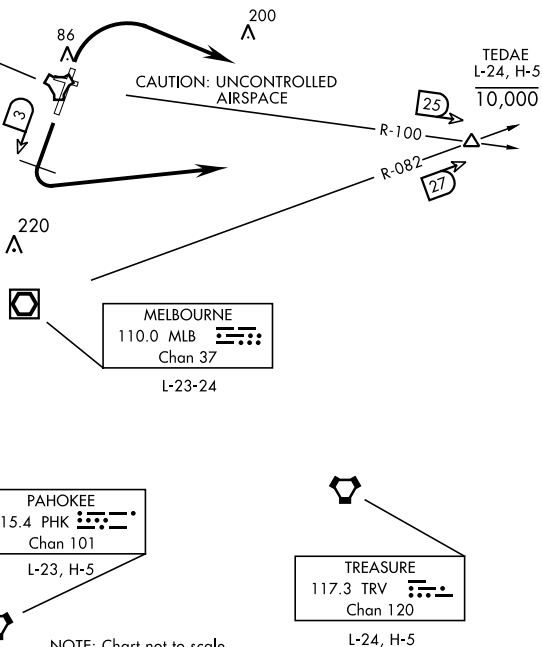
PAHOKEE
115.4 PHK
Chan 101

L-23, H-5

Rwy	Knots	60	120	180	240	300	360
03/21	V/V(fpm)	210	420	630	840	1050	1260

Minimum Climb Rate to 500.

TOP ALTITUDE
2000



DME REQUIRED

NOTE: Chart not to scale.

DEPARTURE ROUTE DESCRIPTION

Expect clearance to filed altitude/flight level 10 minutes after departure.

TAKE-OFF RWY 03: Track runway heading, climb and maintain 2000. After departure end of runway, turn right direct TEDAE (COF R-100/25 DME). After receiving climb clearance from ATC, cross TEDAE at or below 10,000.

TAKE-OFF RWY 21: Track runway heading, climb and maintain 2000. At COF TACAN 3 DME, turn left direct TEDAE (COF R-100/25 DME). After receiving climb clearance from ATC, cross TEDAE at or below 10,000. Note: All aircraft shall not commence turn prior to 3 DME due to noise abatement. Aircraft should avoid Melbourne International Class D Airspace.

OCEAN FOUR DEPARTURE

Amdt 1 28FEB19

COCOA BEACH, FLORIDA

PATRICK AFB (KCOF)