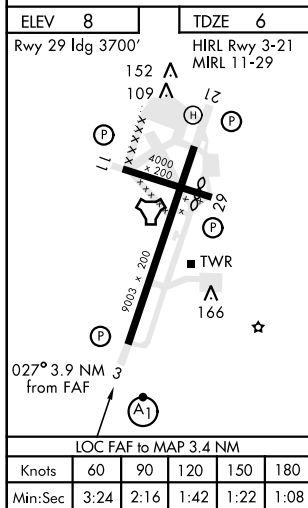
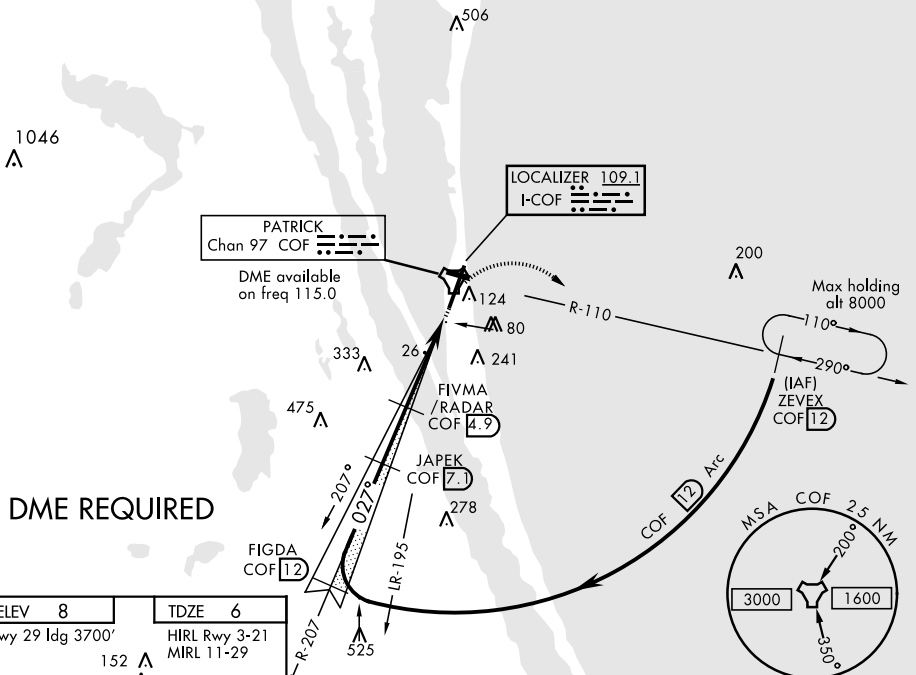


COCOA BEACH, FLORIDA

## ILS or LOC/DME RWY 3

LOC I-COF <b>109.1</b>	APCH CRS <b>027°</b>	Rwy ldg TDZE Arprt Elev <b>9003</b> <b>6</b> <b>8</b>	AL-38 [USAF]	PATRICK AFB (KCOF)
<b>▼</b> * When ALS inop increase RVR to 40 and vis to ¼ mile. <b>**</b> When ALS inop, increase CAT AB RVR to 55 and vis to 1 mile, CAT CD vis to 1¼ miles.			ALSF-1 <b>(A1)</b>	MISSED APPROACH: Climb to 600, then turn right to intercept the COF R-110 direct ZEVEX, maintain 3000 and hold.
ATIS ★ <b>119.175 273.5</b>	ORLANDO APP CON <b>132.65 281.425</b>	PATRICK TOWER ★ <b>133.75 269.375</b>	GND CON <b>124.35 335.8</b>	CLNC DEL <b>118.4 289.4</b>

\*\*\* Circling not authorized W of Rwy 3-21. When Rwy 29 VGSI inop, circling to Rwy 29 NA at night. USAF only: When Rwy 29 VGSI inop, circling to Rwy 29 at night authorized with MAJCOM A3 approval.



ELEV 8 TDZE 6		Rwy 29 ldg 3700' HIRL Rwy 3-21 MIRL 11-29	
Rwy 29 ldg 3700'		HIRL Rwy 3-21 MIRL 11-29	
152 A 109 A 4000 x 200		166 A 166 A	
027° 3.9 NM 3 from FAF		TWR 166 A	
LOC FAF to MAP 3.4 NM		TACAN	
Knots 60 90 120 150 180		Min:Sec 3:24 2:16 1:42 1:22 1:08	
CATEGORY		A B C D	
S-ILS 3 *		205/24 200 (200-½)	
S-LOC 3 **		440/24 435 (500-½) 440/40 435 (500-¾)	
CIRCLING ***		480-1 472 (500-1) 500-1 492 (500-1) 500-1½ 492 (500-1½) 560-2 552 (600-2)	

COCOA BEACH, FLORIDA

28° 14' N-80° 37' W

PATRICK AFB (KCOF)

Amdt 1 31MAR16

## ILS or LOC/DME RWY 3