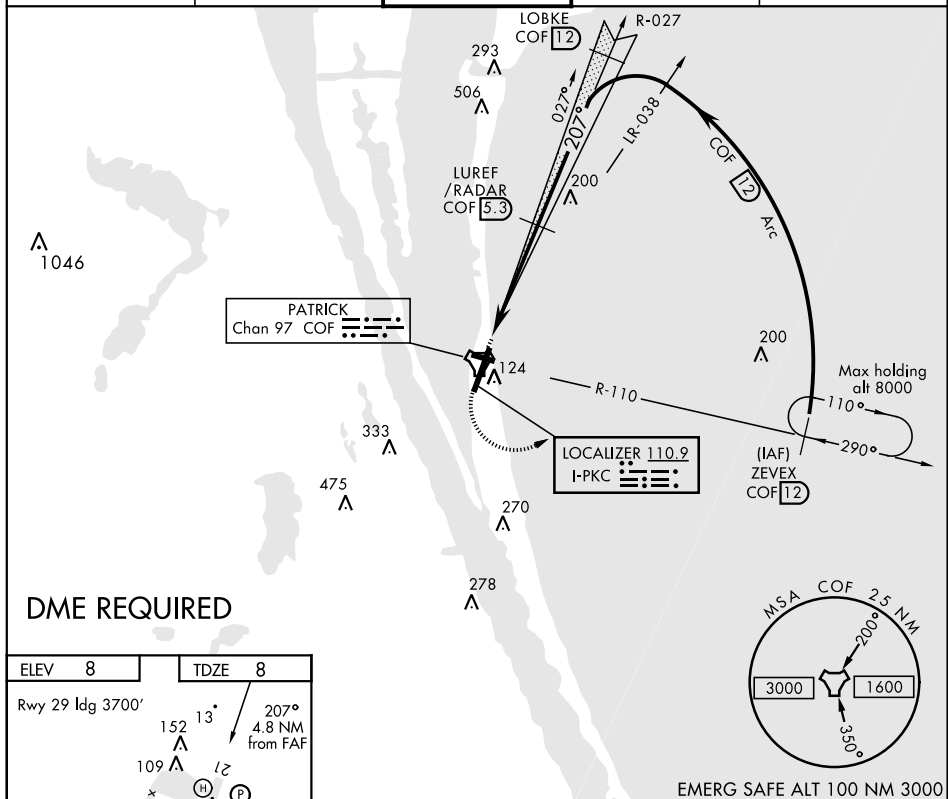


ILS or LOC/DME RWY 21

LOC I-PKC <u>110.9</u>	APCH CRS 207°	Rwy Idg 9003 TDZE 8 Arpt Elev 8	AL-38 [USAF]	PATRICK AFB (KCOF)
----------------------------------	-------------------------	--	--------------	--------------------

<p>T * When Rwy 29 VGSI inop, circling to Rwy 29 at night requires approval from MAJCOM Director of Operations or equivalent. Circling not authorized W of Rwy 3-21.</p>	<p>MISSED APPROACH: Climb to 900, then turn left, intercept the COF R-110 outbound direct ZEYEX, maintain 3000 and hold.</p>
---	---

ATIS ★ 119.175 273.5	ORLANDO APP CON 132.65 281.425	PATRICK TOWER ★ 133.75 269.375	GND CON 124.35 335.8	CLNC DEL 118.4 289.4
-------------------------	-----------------------------------	-----------------------------------	-------------------------	-------------------------



Map showing HIRL Rwy 3-21 MRL 11-29. The map includes a compass rose indicating 207° and 4.8 NM from FAF. Key features include a 4000 x 200 area, a 9003 x 200 area, and a 166 area. The map also shows a 13° angle and a 109° angle. The map is labeled with 'ELEV 8' and 'TDZE 8'.

LOC FAF to MAP 4.3 NM	
Knots	60 90 120 150 180
Min:Sec	4:18 2:52 2:09 1:43 1:26

[illegible]

COCOA BEACH, FLORIDA

28°14'N-80°37'W

PATRICK AFB (KCOF)

Amdt 1 31MAR16

ILS or LOC/DME RWY 21

SE-3, 03 DEC 2020 to 31 DEC 2020