

WAAS
CH **78025**
W02A

APP CRS
019°

Rwy Idg **5500**
TDZE **144**
Apt Elev **145**

RNAV (GPS) RWY 2

HALIFAX-NORTHAMPTON RGNL (IXA)

RNP APCH

▼

▲

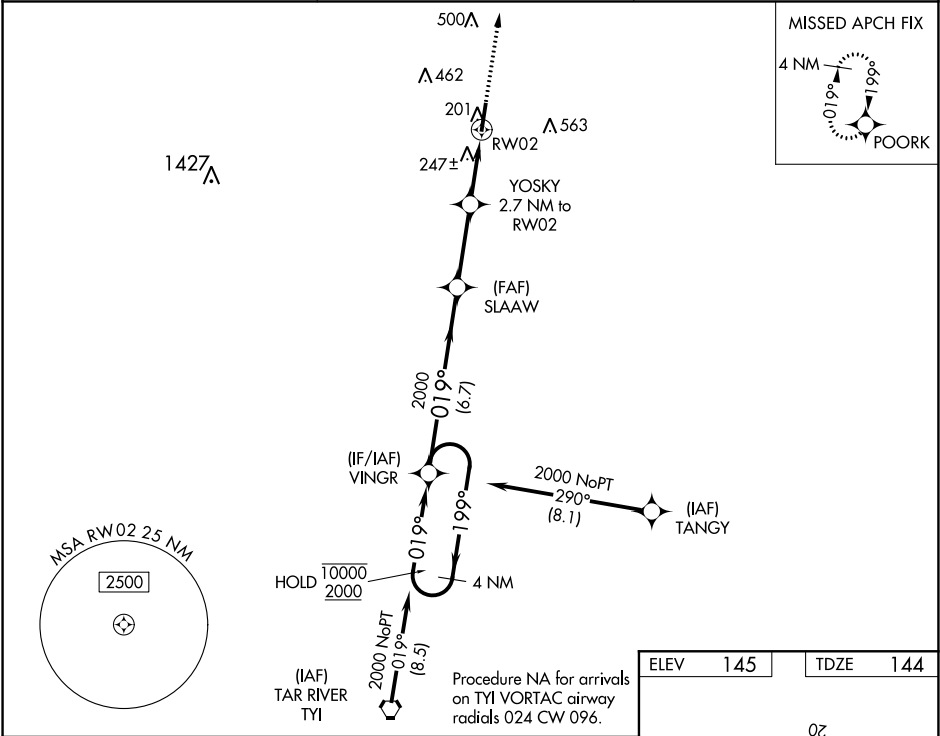
Rwy 2 helicopter visibility reduction below ¾ SM NA. For uncompensated Baro-VNAV systems, LNAV/VNAV NA below -15°C or above 54°C. Circling NA east of Rwy 2-20.

MISSED APPROACH: Climb to 2000 direct POORK and hold.

AWOS-3PT
119.975

WASHINGTON CENTER
132.025 290.425

UNICOM
123.075 (CTAF) 0



4 NM Holding Pattern

VINGR

SLAAW

YOSKY 2.7 NM to RW02

RW02

POORK

*LNAV only.

GP 3.00° TCH 40

6.7 NM

3 NM

1.6 NM

1.1 NM

*1040

*1.1 NM to RW02

CATEGORY	A	B	C	D
LPV DA		394-7/8	250 (300-7/8)	
LNAV/VNAV DA		433-1	289 (300-1)	
LNAV MDA		500-1	356 (400-1)	
CIRCLING	560-1 415 (500-1)	600-1 455 (500-1)	780-1¾ 635 (700-1¾)	860-2¼ 715 (800-2¼)

019° to RW02

HIRL Rwy 2-20 0

REIL Rwy 2 0