

KNIGHTS TWO DEPARTURE

CONCORD, NORTH CAROLINA

ATIS *

133.675

CLNC DEL

118.55

CLNC DEL (when twr closed)

127.25

GND CON

121.85

CONCORD TOWER *

134.65 (CTAF)

UNICOM

122.95

CHARLOTTE DEP CON

128.325 307.8

TAKEOFF MINIMUMS

Rwy 2: Standard.

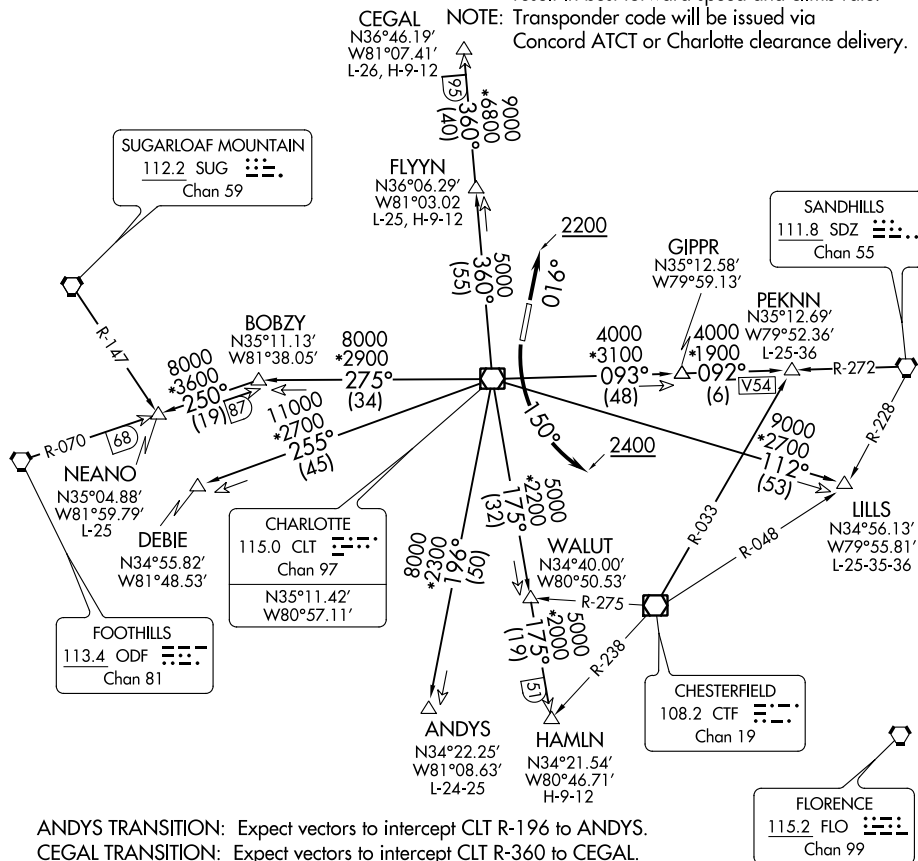
Rwy 20: 300-1¾ or standard with minimum climb of 204' per NM to 1000.
Or alternatively, with standard takeoff minimums and a normal 200' per NM climb gradient, takeoff must occur no later than 1200' prior to DER.

NOTE: For propeller aircraft only.

NOTE: RADAR and DME required.

NOTE: Turboprops: Operate in a manner that will result in best forward speed and climb rate.

NOTE: Transponder code will be issued via Concord ATCT or Charlotte clearance delivery.

TOP ALTITUDE:
3000


ANDYS TRANSITION: Expect vectors to intercept CLT R-196 to ANDYS.

CEGAL TRANSITION: Expect vectors to intercept CLT R-360 to CEGAL.

DEBIE TRANSITION: Expect vectors to intercept CLT R-255 to DEBIE.

FLYYN TRANSITION: Expect vectors to intercept CLT R-360 to FLYYN.

HAMLN TRANSITION: Expect vectors to intercept CLT R-175 to HAMLN.

LILLS TRANSITION: Expect vectors to intercept CLT R-112 to LILLS.

NEANO TRANSITION: Expect vectors to intercept CLT R-275 to BOBZY then ODF R-070 to NEANO.

PEKNN TRANSITION: Expect vectors to intercept CLT R-093 to GIPPR then SDZ R-272 to PEKNN.

(NARRATIVE ON FOLLOWING PAGE)

NOTE: Chart not to scale.

KNIGHTS TWO DEPARTURE

(KNI2.KNI) 03JAN19

CONCORD, NORTH CAROLINA
CONCORD-PADGETT RGNL (JQF)

SE-2, 03 DEC 2020 to 31 DEC 2020