

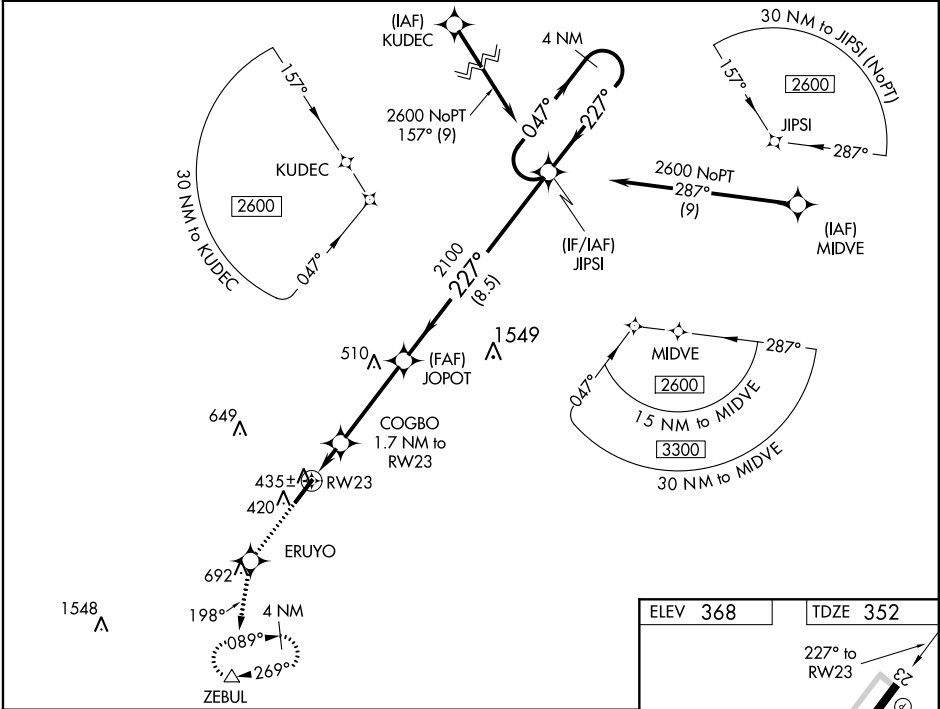
WAAS CH <b>62825</b> <b>W23A</b>	APP CRS <b>227°</b>	Rwy Idg TDZE <b>352</b> Apt Elev <b>368</b>
--	------------------------	---







RNAV (GPS) RWY 23  
TRIANGLE NORTH EXECUTIVE (LHZ)

▼ Baro-VNAV NA when using Raleigh-Durham altimeter setting. For uncompensated Baro-VNAV systems, LNAV/VNAV NA below -15°C (5°F) or above 41°C (105°F). When VGSi inop, Straight-in/Circling Rwy 23 procedure NA at night. DME/DME RNP-0.3 NA. Helicopter visibility reduction below 1 SM NA. When local altimeter setting not received, use Raleigh-Durham altimeter setting and increase all DA 65 feet and all MDA 80 feet; increase LNAV/VNAV all Cats visibility 1/8 mile and LNAV Cats C/D visibility 3/8 mile.

MISSED APPROACH: Climb to 3300 direct ERUYO and on track 198° to ZEBUL and hold, continue climb-in-hold to 3300.

AWOS-3 <b>118.325</b>	RALEIGH APP CON <b>125.3 353.675</b>	UNICOM <b>123.0 (CTAF) 0</b>
--------------------------	---	---------------------------------



3300	ERUYO	tr 198°	ZEBUL								
											
* LNAV only				COGBO 1.7 NM to RW23							
				RW23							
				1.7 NM							
				*900		3.7 NM					
				JOPOT 2100		8.5 NM					
						2100					
				227°		227°					
				JIPSI		4 NM Holding Pattern					
				047°→		2600					
				←227°							
						GP 3.00° TCH 46					
CATEGORY				A		B		C		D	
LPV DA				602-1		250 (300-1)					
LNAV/ VNAV DA				619-1		267 (300-1)					
LNAV MDA				700-1		348 (400-1)					
CIRCLING				800-1 432 (500-1)		820-1 452 (500-1)		820-1½ 452 (500-1½)		920-2 552 (600-2)	

