

LOC/DME I-LHZ <b>109.35</b> Chan <b>30</b> (Y)	APP CRS <b>046°</b>	Rwy Idg TDZE <b>368</b> Apt Elev <b>368</b>
--	------------------------	---

ILS or LOC RWY 5  
TRIANGLE NORTH EXECUTIVE (LHZ)

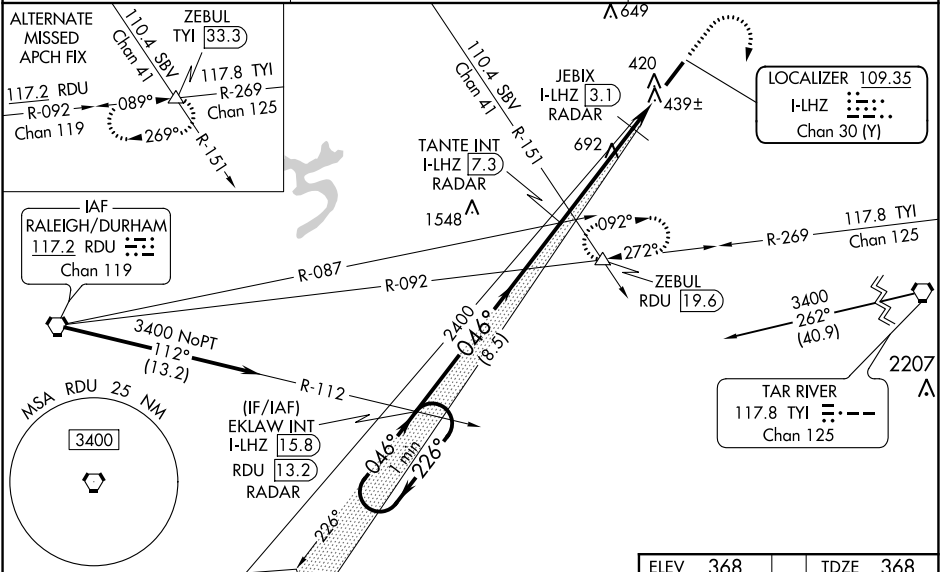
DME or RADAR required.

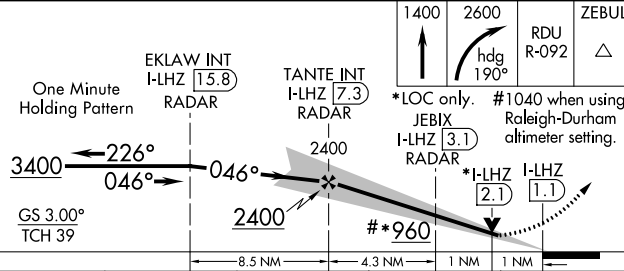
**V** VDP NA when using Raleigh-Durham altimeter setting. When local altimeter setting not received, use Raleigh-Durham altimeter setting and increase all DA 65 feet and all MDA 80 feet; increase S-LOC and Circling Cats C/D visibilities 1/4 SM. For inop ALS when using Raleigh-Durham altimeter setting, increase S-ILS all Cats visibility to 1/2 SM, S-LOC Cats C/D visibility to 1/2 SM and JEBIX FIX minimums S-LOC Cats C/D visibility to 1 1/2 SM.



**MISSED APPROACH:** Climb to 1400 then climbing right turn to 2600 on heading 190° and on RDU VORTAC R-092 to ZEBUL INT/RDU 19.6 DME and hold.

AWOS-3 <b>118.325</b>	RALEIGH APP CON <b>125.3 353.675</b>	UNICOM <b>123.0</b> (CTAF) <b>0</b>
--------------------------	---	--



 <p>One Minute Holding Pattern</p> <p>EKLAW INT I-LHZ [15.8] RADAR</p> <p>TANTE INT I-LHZ [7.3] RADAR</p> <p>3400 ← 226° → 046°</p> <p>GS 3.00° TCH 39</p> <p>2400</p> <p>2400</p> <p>#*960</p> <p>8.5 NM</p> <p>4.3 NM</p> <p>1 NM</p> <p>1 NM</p> <p>*LOC only. JEBIX I-LHZ [3.1] RADAR</p> <p>*I-LHZ [2.1]</p> <p>I-LHZ [1.1]</p> <p>190° hdg</p> <p>RDU R-092</p> <p>ZEBUL</p>				
CATEGORY	A	B	C	D
S-ILS 5	568-½		200 (200-½)	
S-LOC 5	960-½	592 (600-½)	960-1¼	592 (600-1¼)
CIRCLING	960-1	592 (600-1)	960-1¾ 592 (600-1¾)	960-2 592 (600-2)
JEBIX FIX MINIMUMS				
S-LOC 5	700-½	332 (400-½)	700-¾	332 (400-¾)
CIRCLING	800-1 432 (500-1)	820-1 452 (500-1)	820-1½ 452 (500-1½)	920-2 552 (600-2)

