

APP CRS  
**354°**

Rwy Idg  
TDZE  
Apt Elev

**3700**  
**12**  
**12**

**RNAV (GPS) RWY 35**

MT PLEASANT RGNL-FAISON FIELD (L.R.O)

RNP APCH.

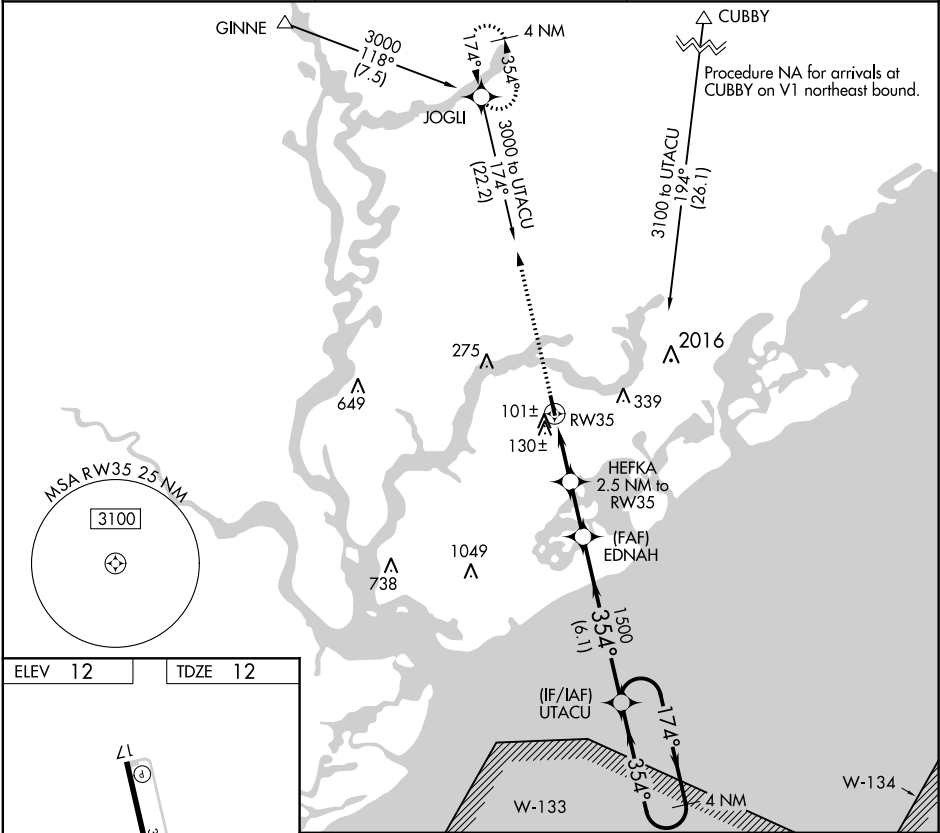
When local altimeter setting not received, use Charleston AFB/Intl altimeter setting and increase all MDA 40 feet, and LNAV Cat C visibility ½ mile.

MISSED APPROACH: Climb to 3000 direct JOGLI and hold, continue climb-in-hold to 3000.

AWOS-3  
**118.625**

CHARLESTON APP CON  
**119.3 379.925**

UNICOM  
**122.7 (CTAF) 0**



ELEV 12

TDZE 12

L1

3700 x 75

35

354° to RW35

MIRL Rwy 17-35 0

3000 JOGLI

VGSI and descent angles not coincident (VGSI Angle 4.00/TCH 27).

HEFKA 2.5 NM to RW35

EDNAH

UTACU

4 NM Holding Pattern

354° 174° 3000

354° 1500

840

2.5 NM 2 NM 6.1 NM

CATEGORY	A	B	C	D
LNAV MDA	380-1	368 (400-1)		NA
CIRCLING	460-1 448 (500-1)	480-1 468 (500-1)	520-1½ 508 (600-1½)	NA