

WAAS  
CH **86512**  
**W06A**

APP CRS  
**060°**

Rwy Idg  
TDZE  
Apt Elev

**5702**  
**604**  
**609**

RNAV (GPS) RWY 6

RALEIGH RGNL AT PERSON COUNTY (TDF)

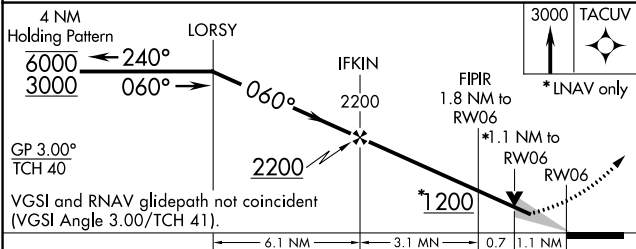
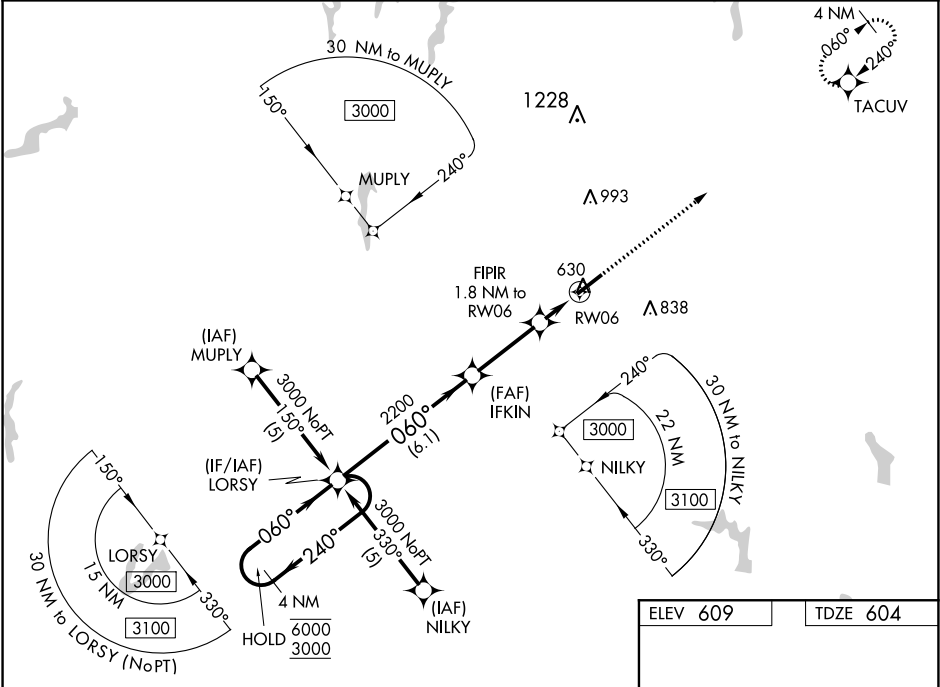
RNP APCH

Baro-VNAV and VDP NA when using Danville altimeter setting. For uncompensated Baro-VNAV systems, LNAV/VNAV NA below -16°C or above 54°C. When local altimeter setting not received, use Danville altimeter setting and increase all LPV DA to 916, LNAV/VNAV DA to 1150 and all MDA 80 feet, increase LNAV Cat C visibility to ¾ SM. For inop ALS, increase LNAV/VNAV all Cats visibility to 1¾ SM and LNAV Cat C visibility to 1 SM. For inop ALS, when using Danville altimeter setting, increase LPV all Cats visibility to ¾ SM, LNAV/VNAV all Cats visibility to 1¾ SM, and LNAV Cat D visibility to 1¾ SM.

MALSR

MISSED APPROACH:  
Climb to 3000 direct TACUV and hold.

AWOS-3 <b>126.725</b>	RALEIGH APP CON <b>132.35 256.9</b>	GCO <b>119.7</b>	UNICOM <b>122.7 (CTAF) 0</b>
--------------------------	--	---------------------	---------------------------------



CATEGORY	A	B	C	D
LPV DA		854-½	250 (300-½)	
LNAV/VNAV DA		1090-1¼	486 (500-1¼)	
LNAV MDA	980-½	376 (400-½)	980-¾	980-1
CIRCLING	1080-1	471 (500-1)	1080-1½	1160-2

