

# RNAV (GPS) RWY 7



## BEAUFORT EXECUTIVE (ARW)

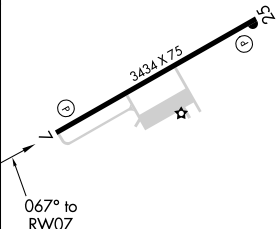
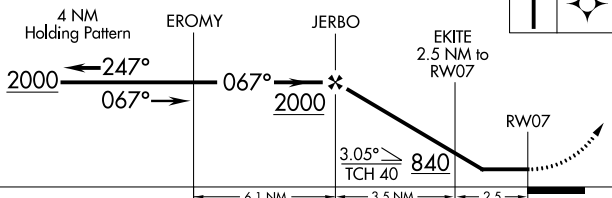
MISSED APPROACH: Climb to 2000 direct EPOLE and hold.

UNICOM  
122.7 (CTAF) **L**

RADAR required for arrivals  
at LFFKO

TDZF	9
------	---

2000	EPOLE
	



REIL Rwy 25  
MIRL Rwy 7-25 **L**