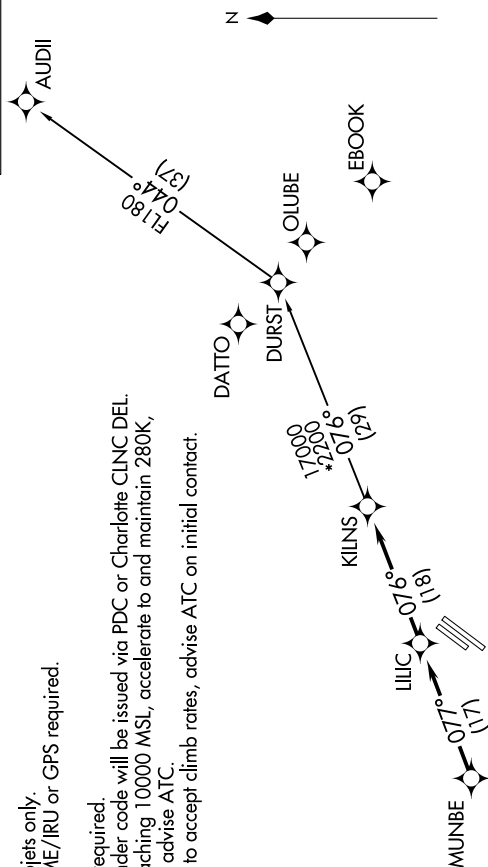


KILNS FOUR DEPARTURE (RNAV)

TOP ALTITUDE
3000



TAKEOFF MINIMUMS

Rwys 4L, 22R: NA.

Rwy 22L: Standard.

Rwy 4R: 300-1½ or standard with minimum climb of 276' per NM to 1000.

NOTE: For turbojets only.
NOTE: DME/DME/IRU or GPS required.
NOTE: RNAV 1.
NOTE: RADAR required.
NOTE: Transponder code will be issued via PDC or Charlotte CLNC DEL.
NOTE: Upon reaching 10000 MSL, accelerate to and maintain 280K, if unable advise ATC.
NOTE: If unable to accept climb rates, advise ATC on initial contact.

AWOS-3
128.175
CLNC DEL
121.75 254.375
GND CON
121.75 254.375
STANLEY COUNTY TOWER ★
126.275 [CTAF] 291.9
UNICOM
123.0
CHARLOTTE DEP CON
128.325 307.8

NOTE: Chart not to scale.

DEPARTURE ROUTE DESCRIPTION

Climb on heading assigned by ATC, expect RADAR vectors to MUNBE, then on depicted route to KILNS, then on AUDIII transition. Maintain 3000. Expect clearance to filed altitude within 10 minutes after departure.

AUDI II TRANSITION (KILNS4.AUDI II)

SE-2, 03 DEC 2020 to 31 DEC 2020

KILNS FOUR DEPARTURE (RNAV)

(KILNS4.KILNS) 03JAN19

ALBEMARLE, NORTH CAROLINA
STANLY COUNTY (VUJ)