

WAAS CH 40221 W16A	APP CRS 162°	Rwy Idg 5498 TDZE 300 Apt Elev 300
--	------------------------	---

RNAV (GPS) RWY 16

ANSON COUNTY-JEFF CLOUD FIELD (AFP)

RNP APCH.

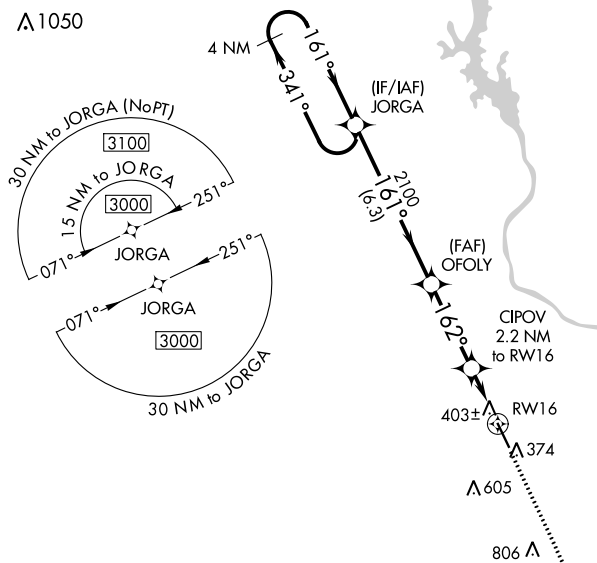
V Procedure NA at night. Baro-VNAV NA when using Rockingham altimeter setting.
A For uncompensated Baro-VNAV systems, LNAV/VNAV NA below -15°C or above 42°C.
Rwy 16 helicopter visibility reduction below 1 SM NA. When local altimeter setting not received, use Rockingham altimeter setting: increase LPV DA to 655 and LPV all Cats visibility $\frac{1}{4}$ SM; increase LNAV/VNAV DA to 634 and LNAV/VNAV all Cats visibility $\frac{1}{8}$ SM; increase all MDA 60 feet and LNAV Cats C/D visibility $\frac{1}{4}$ SM.

MISSED APPROACH: Climb to 3000 direct OPICU and hold.

AWOS-3
119.325

CHARLOTTE APP CON
120.05 307.8

UNICOM
122.8 (CTAF) **L**



MISSED APCH FIX

ELEV	300		TDZE	300
------	-----	--	------	-----

MIRL Rwy 16-34 **L**
RFL Rwy 16 and 34 **L**

4 NM Holding Pattern

JORGA

3000

341°

161°

GP 3.00° TCH 40

OFOLY 2100

CIPOV 2.2 NM to RW16

*1040

162°

6.3 NM

3.3 NM

2.2 NM

RW16

VGS and RNAV glidepaths not coincident (VGS Angle 3.00/TCH 30).

3000

OPICU

*LNAV only

CATEGORY	A	B	C	D
LPV DA	606-1	306 (400-1)		
LNAV/VNAV DA	585-1	285 (300-1)		
LNAV MDA	660-1	360 (400-1)		