

WAAS CH <b>86917</b> <b>W05A</b>	APP CRS <b>049°</b>	Rwy Idg <b>5105</b> TDZE <b>24</b> Apt Elev <b>26</b>
--	------------------------	---

RNAV (GPS) RWY 5

CAPE FEAR RGNL JETPORT/HOWIE FRANKLIN FLD (SUT)

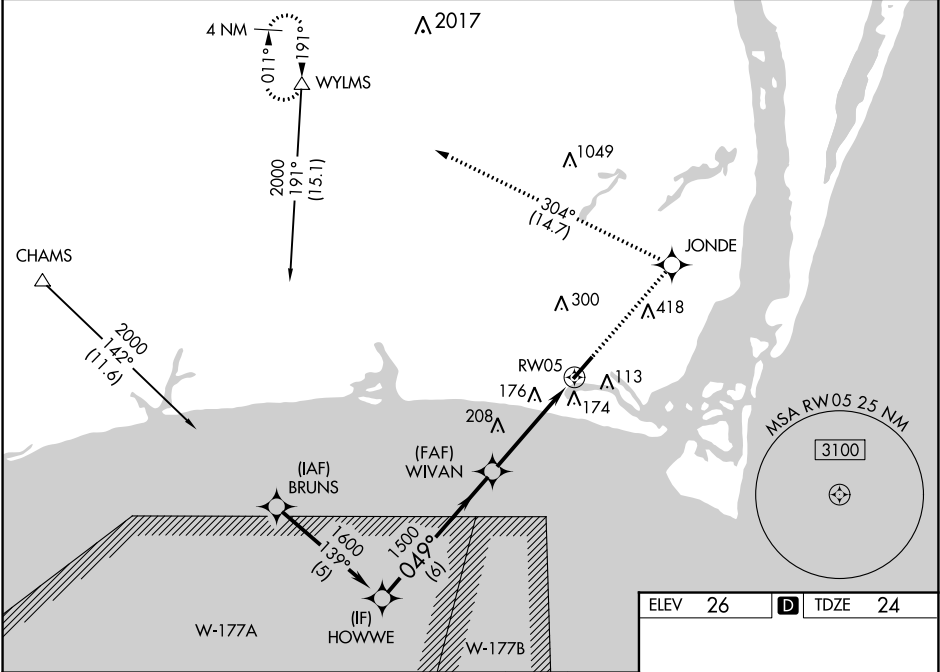
▼

Baro-VNAV NA when using Wilmington altimeter setting. For uncompensated Baro-VNAV systems, LNAV/VNAV NA below -15°C (5°F) or above 54°C (130°F). DME/DME RNP-0.3 NA. Helicopter visibility reduction below 1 SM NA. When local altimeter setting not received, use Wilmington altimeter setting and increase all DA 53 feet and all MDA 60 feet; increase LNAV/VNAV all Cats visibility ¼ mile. VDP NA when using Wilmington altimeter setting.

MISSED APPROACH:

Climb to 3000 direct JONDE and left turn on track 304° to WYLS and hold.

AWOS-3P <b>124.175</b>	WILMINGTON APP CON ★ <b>118.25 284.65</b>	UNICOM <b>123.05 (CTAF) 0</b>
---------------------------	--	----------------------------------



Procedure Turn NA	HOWWE			
	1600	049°	1500	1500
GP 3.00° TCH 39				
6 NM 3.2 NM 1.3 NM				
CATEGORY	A	B	C	D
LPV DA	274-1	250 (300-1)		NA
LNAV/VNAV DA	460-1½	436 (500-1½)		NA
LNAV MDA	460-1	436 (500-1)	460-1¼ 436 (500-1¼)	NA
CIRCLING	480-1	454 (500-1)	520-1½ 494 (500-1½)	NA

