

19115

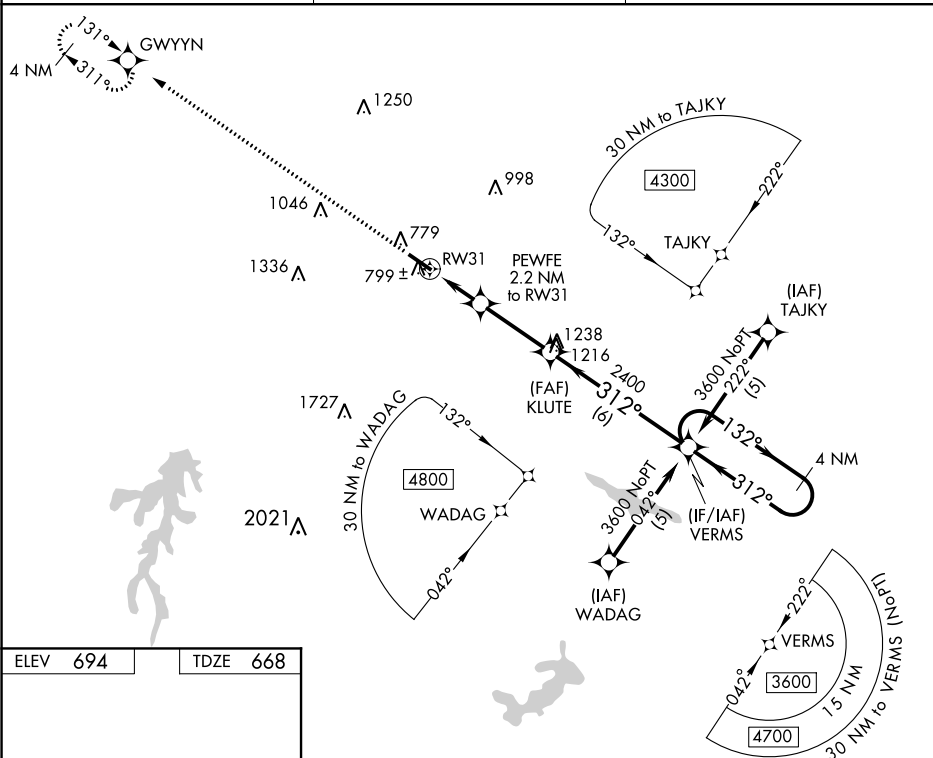
RNAV (GPS) RWY 31

ROCKINGHAM COUNTY NC SHILOH (SIF)

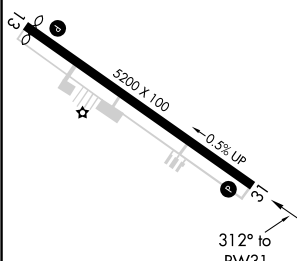
T	Rwy 31 helicopter visibility reduction below 1 SM NA.
A	Procedure NA at night.

MISSED APPROACH: Climb to 3500 direct GWYNN and hold.

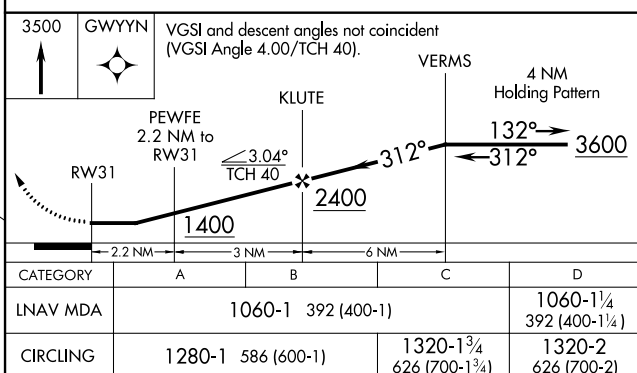
GREENSBORO APP CON
124.35 269.225

UNICOM
122.8 (CTAF) 

Downloaded from <http://ajph.org/> at University of California, San Diego on June 11, 2015



REIL Rwy 31 **L**
HIRL Rwy 13-31 **L**



REIDSVILLE, NORTH CAROLINA
Orig-B 19JUL18

ROCKINGHAM COUNTY NC SHILOH (SIF)
36°26'N-79°51'W RNAV (GPS) RWY 31