

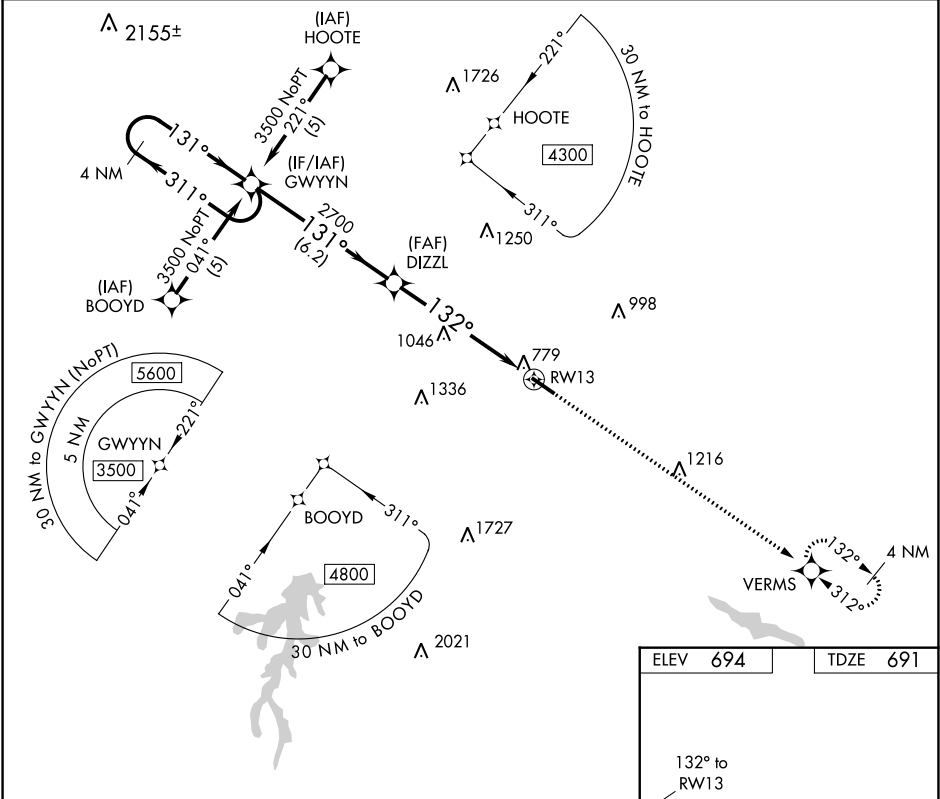
APP CRS	Rwy Idg	4999
132°	TDZE	691
	Apt Elev	694

RNAV (GPS) RWY 13

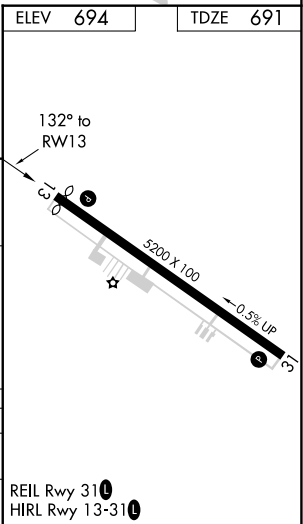
ROCKINGHAM COUNTY NC SHILOH (SIF')

RNP APCH.	MISSED APPROACH: Climb to 3600 direct VERMS and hold.
▼ Rwy 13 helicopter visibility reduction below 1 SM NA. ▲ Procedure NA at night.	

AWOS-3 119.775	GREENSBORO APP CON 124.35 269.225	UNICOM 122.8 (CTAF) 1
-------------------	--------------------------------------	--------------------------



VGSIs and descent angles not coincident (VGSIs Angle 4.00/TCH 33).			
4 NM Holding Pattern			
GWYYN			
3500 ← 311° / 131° →			
DIZZL			
2700			
3.06° TCH 33			
RW13			
6.2 NM			
6.1 NM			
CATEGORY	A	B	C
LNNAV MDA	1300-1	609 (700-1)	1300-1¾ 609 (700-1¾)
CIRCLING	1300-1	606 (700-1)	1320-1¾ 626 (700-1¾)
			D
			1300-2 609 (700-2)
			1320-2 626 (700-2)



SE-2, 03 DEC 2020 to 31 DEC 2020

SE-2, 03 DEC 2020 to 31 DEC 2020