

WAAS

CH **56524**

W04A

APP CRS

040°

Rwy Idg

4401

TDZE

34

Apt Elev

35

RNAV (GPS) RWY 4

CONWAY-HORRY COUNTY (HYW)

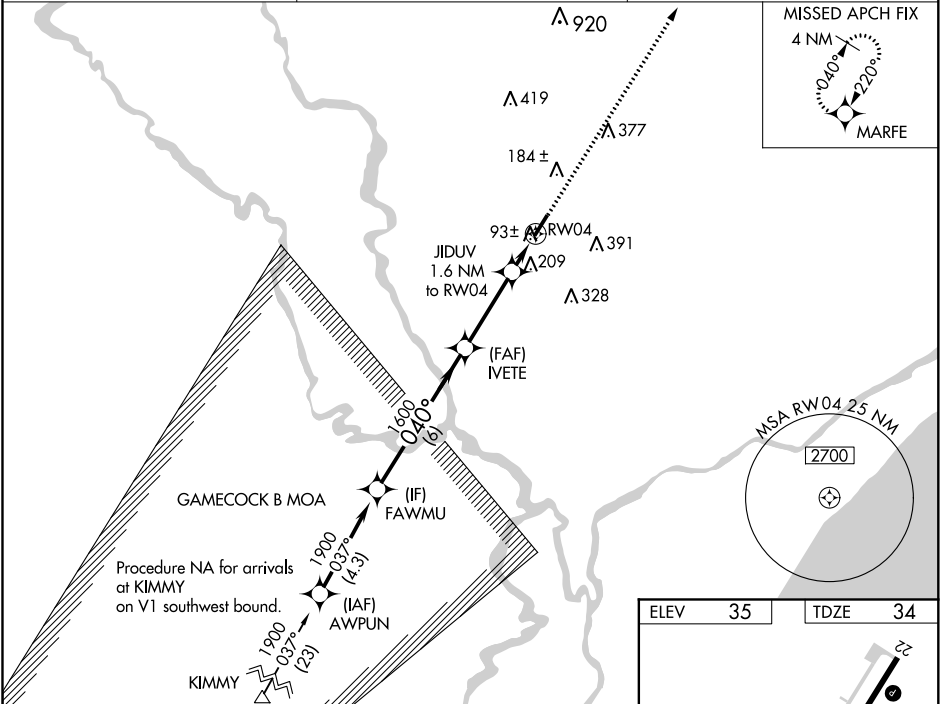
▼

▲

Baro-VNAV NA when using Myrtle Beach altimeter setting. For uncompensated Baro-VNAV systems, LNAV/VNAV NA below -15°C (5°F) or above 43°C (109°F). DME/DME RNP-0.3 NA. Helicopter visibility reduction below 1 SM NA. When local altimeter setting not received, use Myrtle Beach altimeter setting and increase all DA 32 feet and all MDA 40 feet; increase LNAV/VNAV all Cats and LNAV Cats C and D visibility ½ mile. When VGSI inop, Straight-In minimums NA at night. When VGSI inop, Circling Rwy 22 NA at night.

MISSED APPROACH:
Climb to 1900 direct MARFE and hold.

AWOS-3 119.525	MYRTLE BEACH APP CON★ 127.4 257.95	UNICOM 122.7 (CTAF) 0
--------------------------	--	---------------------------------



Procedure Turn NA FAWMU		VGSI and RNAV glidepath not coincident (VGSI Angle 4.00/TCH 42).		1900	MARFE
GP 3.00° TCH 40		IVETE		1600	*NAV only.
1900		1600		JIDUV 1.6 NM to RW04	
6 NM		3.2 NM		1.6 NM	
CATEGORY	A	B	C	D	
LPV DA	315-1		281 (300-1)		
LNAV/DA VNAV	525-1¾		491 (500-1¾)		
LNAV MDA	460-1	426 (500-1)	460-1¼	426 (500-1¼)	
CIRCLING	520-1	485 (500-1)	520-1½	600-2	
			485 (500-1½)	565 (600-2)	

