

WAAS  
CH **90424**  
**W22A**

APP CRS  
**220°**

Rwy Idg  
TDZE **35**  
Apt Elev **35**

**RNAV (GPS) RWY 22**

CONWAY-HORRY COUNTY (HYW)

▼ For uncompensated Baro-VNAV sytems, LNAV/VNAV NA below -1.5°C (5°F) or above 43°C (109°F). DME/DME RNP-0.3 NA. Helicopter visibility reduction below 1 SM NA. When local altimeter setting not received, use Myrtle Beach altimeter setting and increase all DA 32 feet and all MDA 40 feet; increase LNAV/VNAV all Cats visibility 1/8 mile and LNAV Cats C and D visibility 1/4 mile. Baro-VNAV NA when using Myrtle Beach altimeter setting. When VGSI inop, Straight-in/Circling Rwy 22 procedure NA at night.

▲ MISSED APPROACH: Climb to 500 then climbing left turn to 1900 direct MARFE and hold.

AWOS-3 <b>119.525</b>	MYRTLE BEACH APP CON ★ <b>127.4 257.95</b>	UNICOM <b>122.7 (CTAF) 0</b>
--------------------------	---	---------------------------------

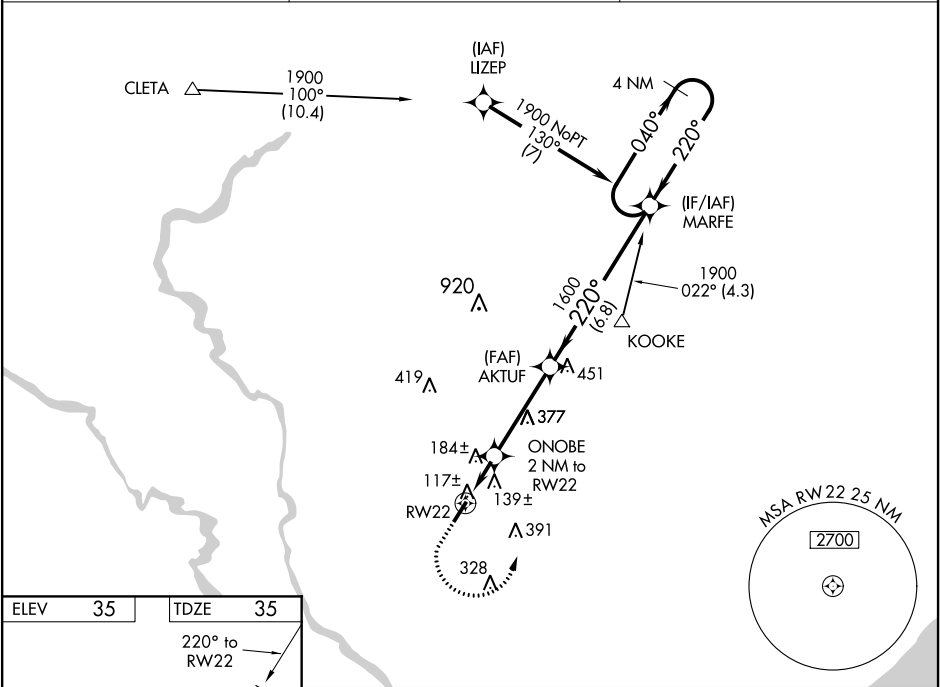


Diagram of Runway 22 showing its length (4401 x 75) and a star symbol at the start.

REIL Rwy 4 and 22  
MIRL Rwy 4-22

<div>500</div> <div>1900</div> <div>MARFE</div>	<div>500</div> <div>1900</div> <div>MARFE</div>	VGSI and RNAV glidepath not coincident (VGSI Angle 4.00/TCH 46).			
*LNAV only.		ONOBE 2 NM to RW22		MARFE	
		RW22		AKTUF	
2 NM		3.7 NM		6.8 NM	
CATEGORY	A	B	C	D	
LPV DA		285-1 250 (300-1)			
LNAV/VNAV DA		438-1 <sup>3</sup> / <sub>8</sub> 403 (500-1 <sup>3</sup> / <sub>8</sub> )			
LNAV MDA	440-1 405 (500-1)		440-1 <sup>1</sup> / <sub>8</sub> 405 (500-1 <sup>1</sup> / <sub>8</sub> )		
CIRCLING	520-1 485 (500-1)		520-1 <sup>1</sup> / <sub>2</sub> 485 (500-1 <sup>1</sup> / <sub>2</sub> )	600-2 565 (600-2)	