

WAAS  
CH **63121**  
**W05A**

APP CRS  
**045°**

Rwy Idg  
TDZE  
Apt Elev  
**6003**  
**135**  
**137**

**RNAV (GPS) RWY 5**  
DUPLIN COUNTY (DPL)

RNP APCH.

▼

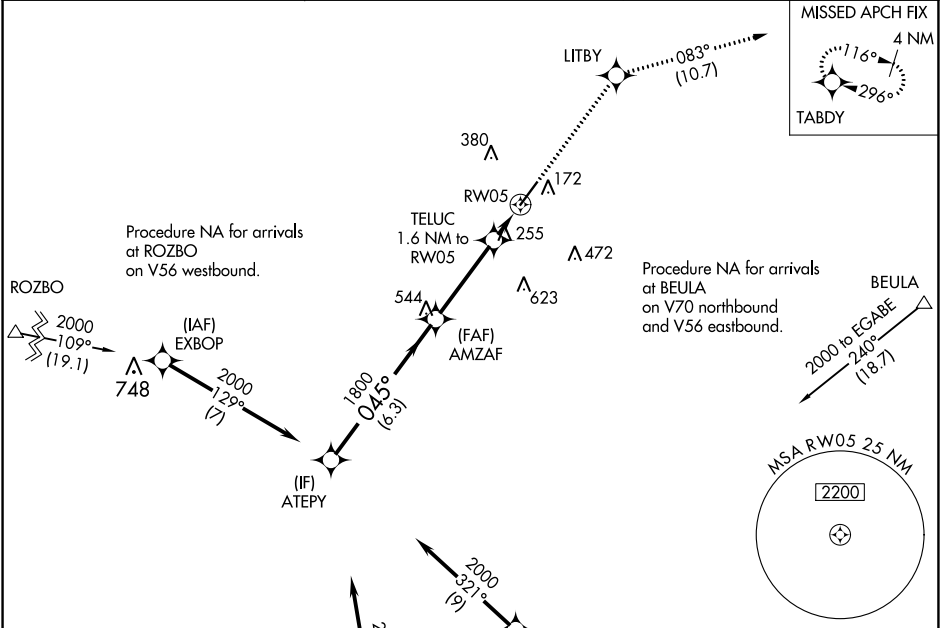
For uncompensated Baro-VNAV systems, LNAV/VNAV NA below -15°C or above 54°C.

MISSED APPROACH: Climb to 2000 direct LITBY and on track 083° to TABDY and hold.

AWOS-3  
**120.675**

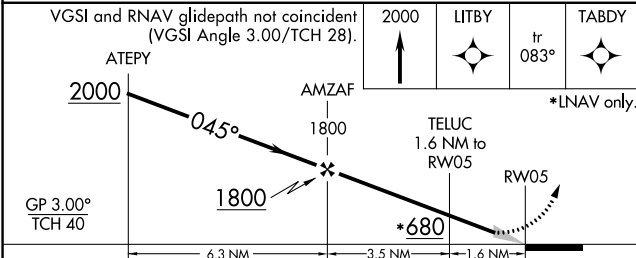
SEYMOUR JOHNSON APP CON★  
**119.7 273.6**

UNICOM  
**123.0 (CTAF) 0**



ELEV 137

TDZE 135



| CATEGORY     | A     | B           | C             | D            |
|--------------|-------|-------------|---------------|--------------|
| LPV DA       |       | 385-¾       | 250 (300-¾)   |              |
| LNAV/VNAV DA |       | 396-7/8     | 261 (300-7/8) |              |
| LNAV MDA     | 520-1 | 385 (400-1) | 520-1½        | 385 (400-1½) |

