

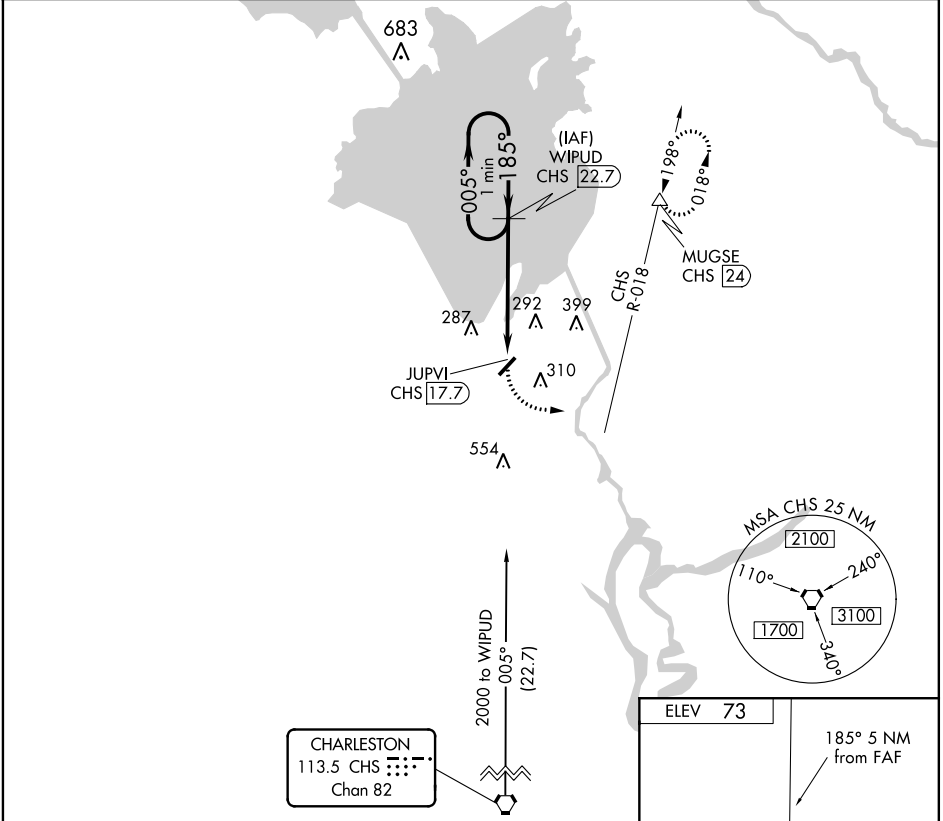
VORTAC CHS <b>113.5</b> Chan <b>82</b>	APP CRS <b>185°</b>	Rwy Idg TDZE Apt Elev	<b>N/A</b> <b>N/A</b> <b>73</b>
--	------------------------	-----------------------------	---------------------------------------

VOR/DME-A  
BERKELEY COUNTY (MKS)

Procedure NA at night. When local altimeter setting not received, use Charleston AFB/Intl altimeter setting and increase all MDA 60 feet and Cat C visibility ¼ mile. Helicopter visibility reduction below 1 SM NA.

MISSED APPROACH: Climbing left turn to 2000 via heading 050° and CHS R-018 to MUGSE/CHS 24 DME and hold.

AWOS-3 <b>119.175</b>	CHARLESTON APP CON <b>119.3 379.925</b>	UNICOM <b>123.05 (CTAF)</b>
--------------------------	--	--------------------------------



CATEGORY	A	B	C	D
	560-1 487 (500-1)	620-1 547 (600-1)	620-1½ 547 (600-1½)	640-2 567 (600-2)

