

APP CRS  
**230°**

Rwy Idg  
**4351**

TDZE  
**73**

Apt Elev  
**73**

RNAV (GPS) RWY 23

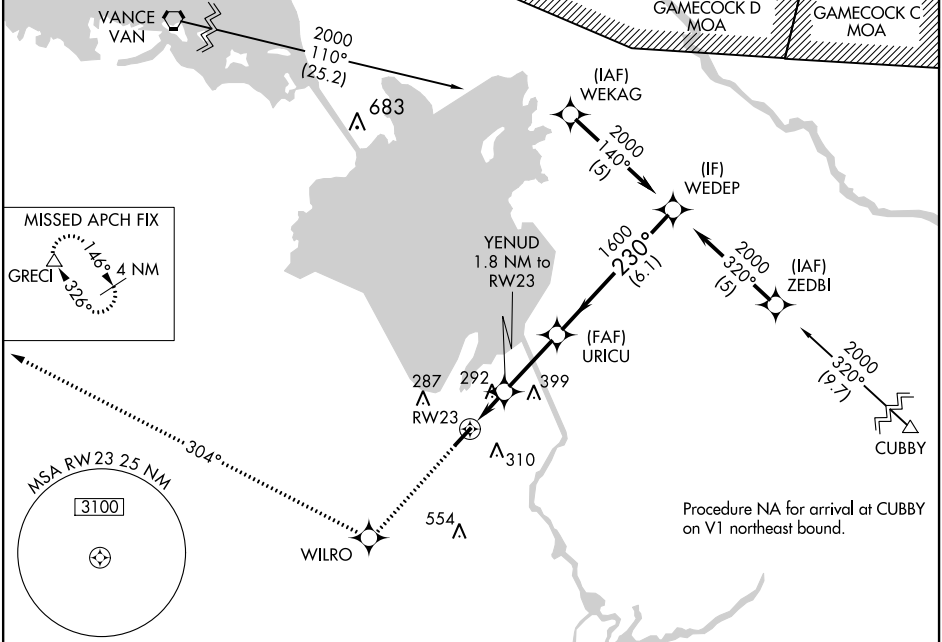
BERKELEY COUNTY (MKS)

NA

DME/DME RNP-0.3 NA. Procedure NA at night. Helicopter visibility reduction below 1 SM NA. When local altimeter setting not received, use Charleston AFB/Intl altimeter setting and increase all MDA 60 feet and increase LNAV Cat C/D and Circling Cat C visibility ¼ mile.

MISSED APPROACH: Climb to 2000 direct WILRO and via 304° track to GRECI and hold.

AWOS-3 <b>119.175</b>	CHARLESTON APP CON <b>119.3 379.925</b>	UNICOM <b>123.05</b> (CTAF) <b>0</b>
--------------------------	--	---



ELEV **73**

TDZE **73**

230° to RW23

2000	WILRO	304° tr	GRECI	VGSI and descent angles not coincident (VGSI Angle 3.00/TCH 44).	WEDEP
<div><div>URICU</div><div>YENUD 1.8 NM to RW23</div><div>680</div><div>1600</div><div>230°</div><div>2000</div><div>1.8 NM</div><div>2.8 NM</div><div>6.1 NM</div></div>					
CATEGORY	A	B	C	D	
LNAV MDA	560-1	487 (500-1)	560-1¼ 487 (500-1¼)	560-1½ 487 (500-1½)	
CIRCLING	560-1 487 (500-1)	620-1 547 (600-1)	620-1½ 547 (600-1½)	640-2 567 (600-2)	