

WAAS CH 99517 W05A	APP CRS 048°	Rwy Idg 5002 TDZE 996 Apt Elev 1013
--	------------------------	--

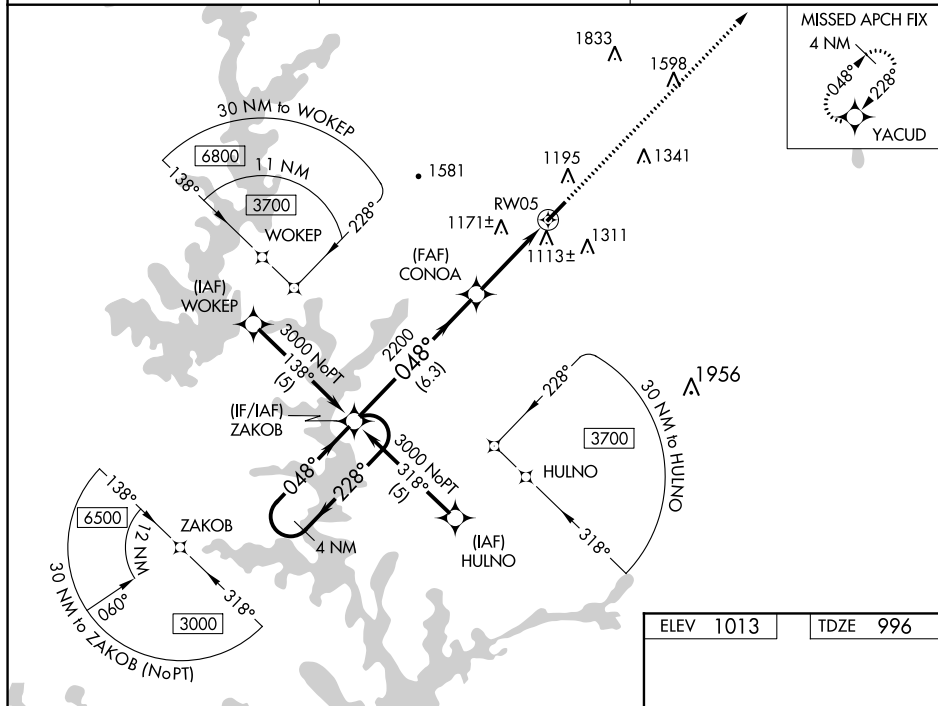
RNAV (GPS) RWY 5

PICKENS COUNTY (LQK)

▼ For uncompensated Baro-VNAV systems, LNAV/VNAV NA below -17°C (2°F) or above 46°C (114°F). DME/DME RNP-0.3 NA. Visibility reduction by helicopters NA. When local altimeter setting not received, use Clemsom altimeter setting and increase LPV DA to 1292, LNAV/VNAV DA to 1487, and all MDA 60 feet; increase LPV all Cats, LNAV and Circling Cats C and D visibility ¼ mile. Baro-VNAV NA when using Clemsom altimeter setting. VDP NA with Clemsom altimeter setting.

MISSED APPROACH:
Climb to 4000 direct
YACUD and hold

AWOS-3 120.0	GREER APP CON ★ 118.8 270.275	UNICOM 122.8 (CTAF) 0
------------------------	---	--



ELEV	1013		TDZE	996
------	------	--	------	-----

