

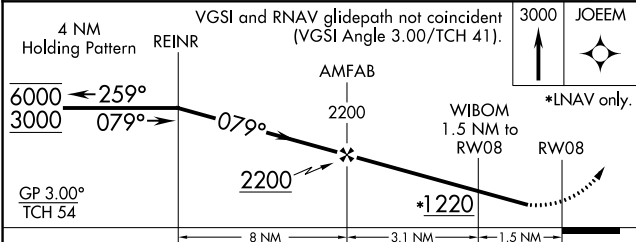
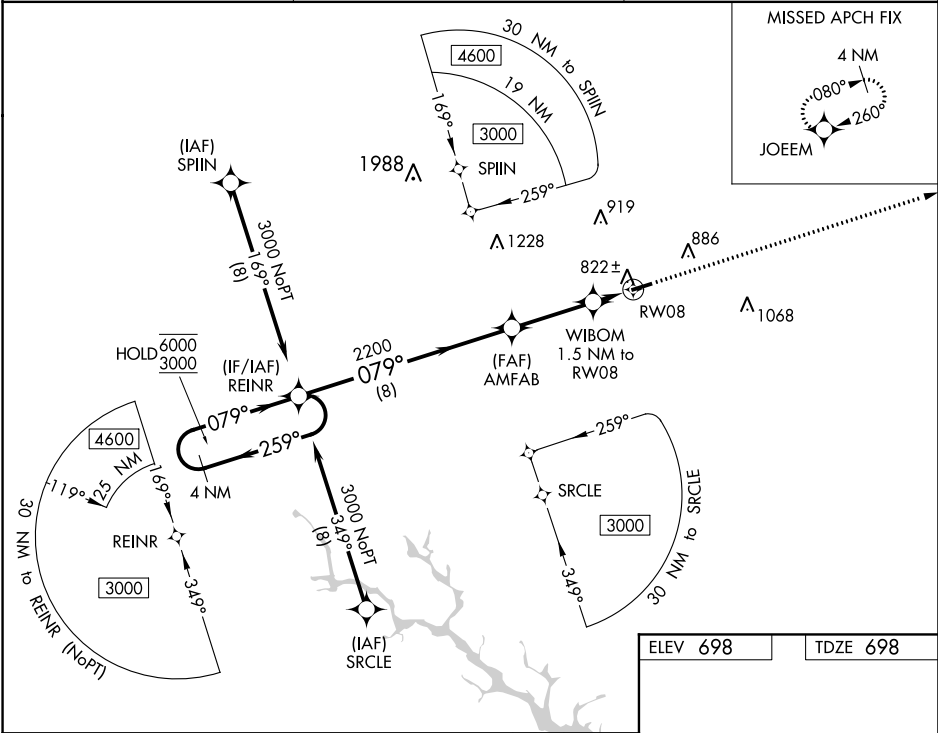
WAAS CH 72635 W08A	APP CRS 079°	Rwy Idg TDZE 698 Apt Elev 698	4051
--	------------------------	---	-------------

RNAV (GPS) RWY 8

LAURENS COUNTY (LUX)

RNP APCH.	MISSED APPROACH: Climb to 3000 direct JOEEM and hold.
▼ Rwy 8 helicopter visibility reduction below ¾ SM NA. For uncompensated Baro-VNAV systems, LNAV/VNAV NA below -16°C or above 54°C.	

AWOS-3 123.975	GREER APP CON ★ 120.6 350.2	UNICOM 122.8 (CTAF) 1
--------------------------	---------------------------------------	---------------------------------



CATEGORY	A	B	C	D
LPV DA	948-¾	250 (300-¾)		NA
LNAV/VNAV DA	957-¾	259 (300-¾)		NA
LNAV MDA	1080-1	382 (400-1)		NA
CIRCLING	1200-1	502 (600-1)		NA

