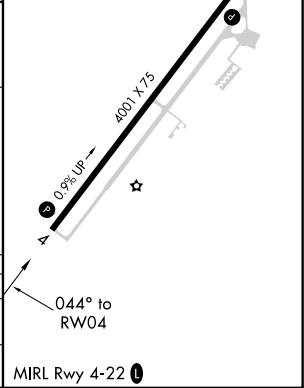
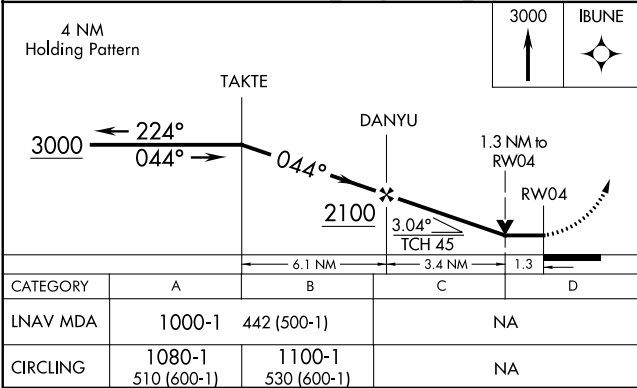
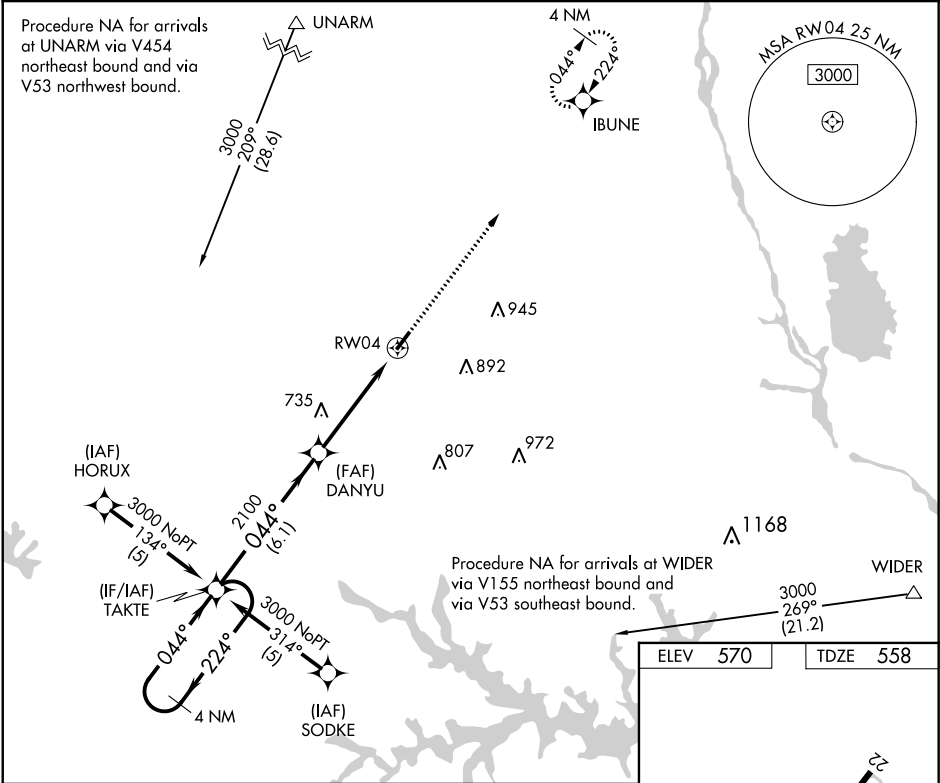


APP CRS	Rwy Idg	4001
044°	TDZE	558
	Apt Elev	570

RNAV (GPS) RWY 4  
NEWBERRY COUNTY (EOE)

<p>▼ DME/DME RNP-0.3 NA. When local altimeter setting not received, use Greenwood County altimeter setting and increase all MDA 80 feet. VDP NA when using Greenwood County altimeter setting. Helicopter visibility reduction below ¾ SM NA.</p>	<p>MISSED APPROACH: Climb to 3000 direct IBUNE and hold.</p>
---	--

AWOS-3 124.275	COLUMBIA APP CON 133.4 285.6	UNICOM 122.8 (CTAF) 0
-------------------	---------------------------------	--------------------------



SE-2, 03 DEC 2020 to 31 DEC 2020

SE-2, 03 DEC 2020 to 31 DEC 2020