

WAAS  
CH **77818**  
**W07A**

APP CRS  
**065°**

Rwy Idg **5003**  
TDZE **147**  
Apt Elev **147**

RNAV (GPS) RWY 7

MARLBORO COUNTY JETPORT-H E AVENT FIELD (BBP)

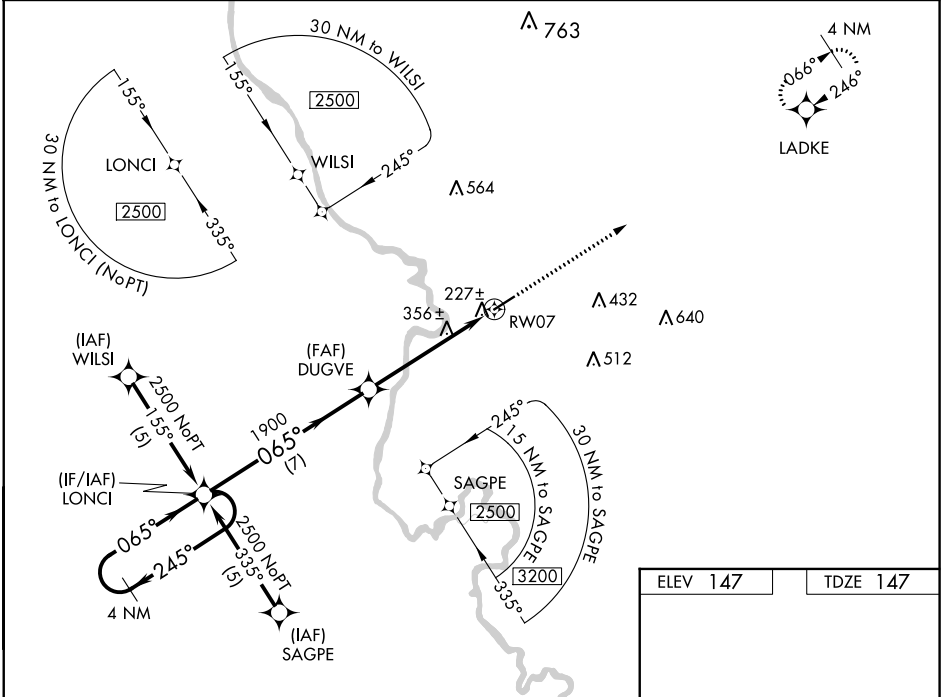
RNP APCH.

▼

Baro-VNAV NA when using Florence altimeter setting. For uncompensated Baro-VNAV systems, LNAV/VNAV NA below -15°C or above 48°C. Rwy 7 helicopter visibility reduction below ¾ SM NA. When local altimeter setting not received, use Florence altimeter setting and increase all DA 61 feet and MDA 80 feet; increase LPV all Cats, LNAV/VNAV all Cats, and LNAV Cats C and Cat D visibility ¼ mile. VDP NA with Florence altimeter setting.

MISSED APPROACH: Climb to 2500 direct LADKE and hold.

|                            |  |                               |
|----------------------------|--|-------------------------------|
| AWOS-3PT<br><b>123.825</b> | FLORENCE APP CON ★<br><b>118.6 341.7</b> | UNICOM<br><b>122.8 (CTAF)</b> |
|----------------------------|--|-------------------------------|



4 NM Holding Pattern

LONCI

2500

GP 3.00° TCH 40°

245°

065°

065°

1900

DUGVE

7 NM

3.9 NM

1.4 NM

RW07

\* LNAV only.

2500

LADKE

5003 X 74

065° to RW07

| CATEGORY     | A                   | B                   | C                   | D |
|--------------|---------------------|---------------------|---------------------|---|
| LPV DA       | 437-1 290 (300-1)   |                     |                     |   |
| LNAV/VNAV DA | 507-1¼ 360 (400-1¼) |                     |                     |   |
| LNAV MDA     | 620-1 473 (500-1)   | 620-1¼ 473 (500-1¼) | 620-1½ 473 (500-1½) |   |

MIRL Rwy 7-25  
REIL Rws 7 and 25