

WAAS CH 93818 W17A	APP CRS 174°	Rwy Idg TDZE Apt Elev	5000 657 657
--	------------------------	-----------------------------	---

RNAV (GPS) RWY 17

CHESTER CATAWBA RGNL (DCM)

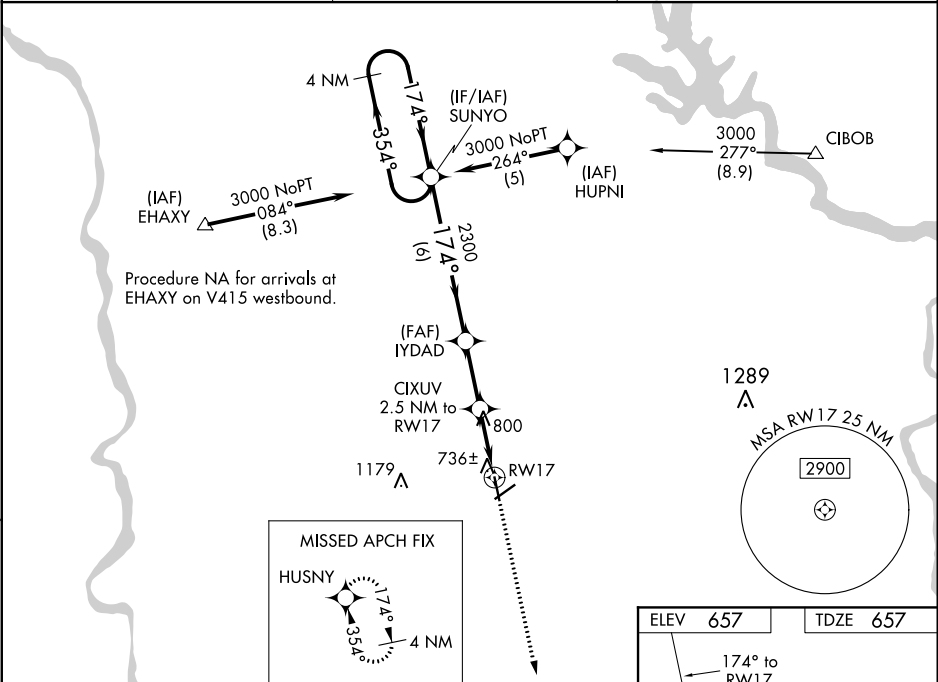
⚠

⚠

Circling to Rwy 5-23 NA at night. For uncompensated Baro-VNAV systems, LNAV/VNAV NA below -16°C (4°F) or above 47°C (116°F). DME/DME RNP-0.3 NA. Visibility reduction by helicopters NA. When local altimeter setting not received, use Rock Hill altimeter setting and increase all DA 33 feet and all MDA 40 feet and LNAV Cat D visibility ¼ mile. Baro-VNAV and VDP NA when using Rock Hill altimeter setting.

MISSED APPROACH:
Climb to 3000 direct HUSNY and hold.

AWOS-3 120.975	CHARLOTTE APP CON 120.05 307.8	UNICOM 122.7 (CTAF) 0
--------------------------	--	---------------------------------



4 NM Holding Pattern		SUNYO		IYDAD		CIXUV 2.5 NM to RW17		3000 ↑ HUSNY	
3000 174°→ ←354°		174°		2300 *1480		*1.1 NM to RW17		*LNAV only.	
GP 3.00° TCH 34		6 NM		2.5 NM		1.4 NM		1.1	
CATEGORY	A	B	C	D					
LPV DA	907-1 250 (300-1)								
LNAV/VNAV DA	1134-1¾ 477 (500-1¾)								
LNAV MDA	1060-1	403 (500-1)	1060-1¼	403 (500-1¼)					
CIRCLING	1160-1	503 (600-1)	1160-1½	503 (600-1½)	1220-2	563 (600-2)			

