

WAAS CH 93810 W23A	APP CRS 225°	Rwy Idg TDZE Apt Elev	4800 37 37
--	------------------------	-----------------------------	---------------------------------------

RNAV (GPS) RWY 23

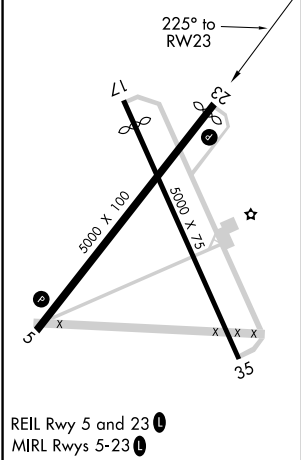
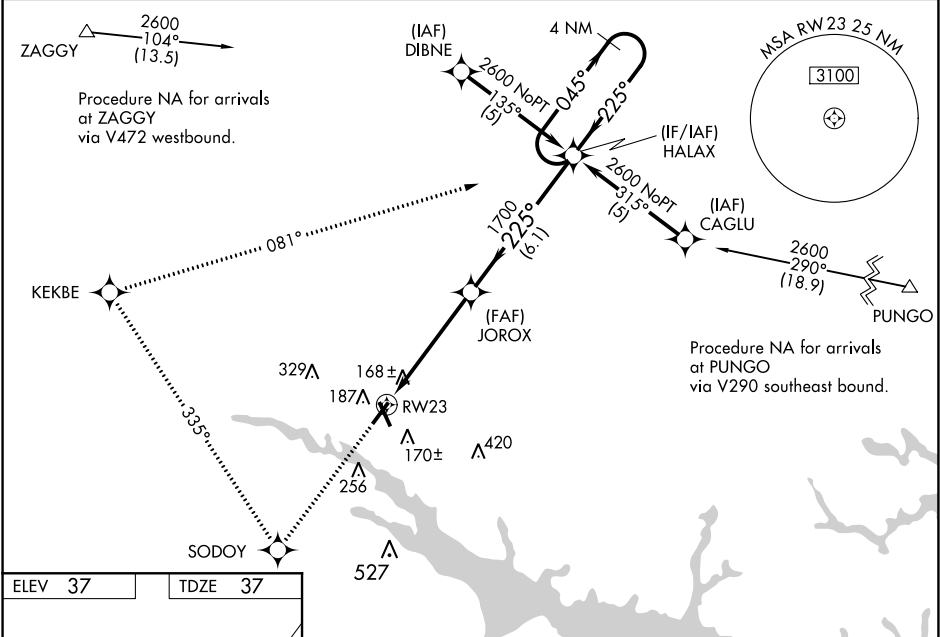
WASHINGTON-WARREN(OCW)

⚠

Baro-VNAV NA when using Greenville altimeter setting.
For uncompensated Baro-VNAV systems, LNAV/VNAV NA below -15° C (5° F) or above 48° C (118° F). DME/DME RNP-0.3 NA.
When local altimeter setting not received, use Greenville altimeter setting and increase LPV DA to 477, LNAV/VNAV DA to 514, and all MDA 60 feet; increase LNAV/VNAV all Cats., and LNAV Cats C and D visibility ¼ mile. Night Landing: Rwy 17 NA.

MISSED APPROACH: Climb to 2600 direct SODOY and right turn via 335° track to KEKBE and right turn via 081° track to HALAX and hold.

AWOS-3 120.175	CHERRY POINT APP CON 119.35 377.175	UNICOM 122.7 (CTAF) 0
--------------------------	---	---------------------------------



2600	SODOY	KEKBE	HALAX	HALAX	4 NM Holding Pattern
↑	✧	tr 335°	tr 081°	✧	
GP 3.00° TCH 40					
CATEGORY	A	B	C	D	
LPV DA	436-1½ 399 (400-1½)				
LNAV/VNAV DA	473-1½ 436 (500-1½)				
LNAV MDA	420-1 383 (400-1)				420-1¼ 383 (400-1¼)
CIRCLING	540-1 503 (600-1)		540-1½ 503 (600-1½)		620-2 583 (600-2)