

| | | |
|--|------------------------|---|
| WAAS CH 77837 W19A | APP CRS 188° | Rwy Idg 4501 TDZE 66 Apt Elev 67 |
|--|------------------------|---|

RNAV (GPS) RWY 19

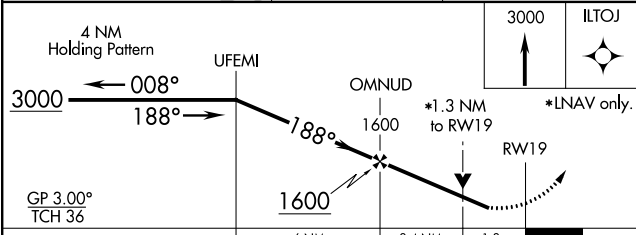
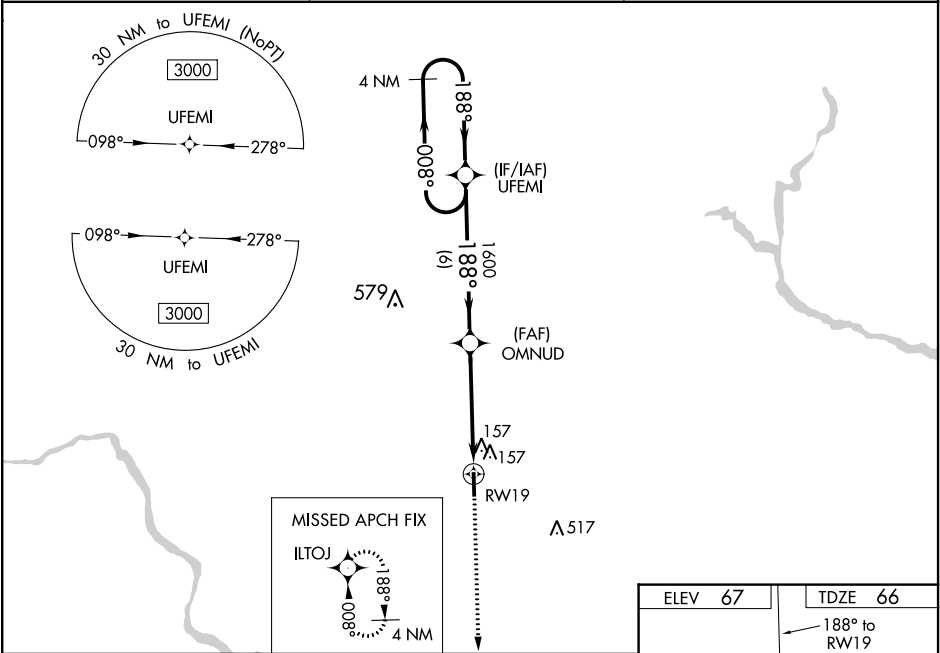
TRI-COUNTY AT HENRY JONER FIELD (ASJ)

⚠

DME/DME RNP-0.3 NA. Night Landing: Rwy 1 NA. VDP and Baro-VNAV NA when using Franklin altimeter setting. When local altimeter setting not received, use Franklin altimeter setting and increase all DA 67 feet and all MDA 80 feet; increase LPV and LNAV/VNAV all Cats visibility ¼ mile and LNAV Cat C/D visibility ⅛ mile. For uncompensated Baro-VNAV systems, LNAV/VNAV NA below -15°C (5°F) or above 54°C (130°F). Helicopter visibility reduction below ¾ SM NA.

MISSED APPROACH: Climb to 3000 direct ILTOJ and hold, continue climb-in-hold to 3000.

| | | |
|--------------------------|---|---------------------------------|
| AWOS-3 119.075 | WASHINGTON CENTER 123.85 279.65 | UNICOM 122.8 (CTAF) 0 |
|--------------------------|---|---------------------------------|



| CATEGORY | A | B | C | D |
|--------------|--------|--------------|------------------------|------------------------|
| LPV DA | 353-1 | 287 (300-1) | | |
| LNAV/VNAV DA | 430-1¼ | 364 (400-1¼) | | |
| LNAV MDA | 520-1 | 454 (500-1) | 520-1⅜ | 454 (500-1⅜) |
| CIRCLING | 580-1 | 513 (600-1) | 580-1½ 513 (600-1½) | 820-2½ 753 (800-2½) |

