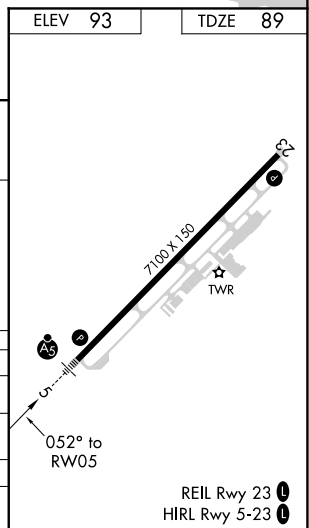
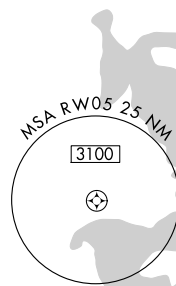


RNAV (GPS) RWY 5
ALBERT J ELLIS (OAJ)

ALBERT J. ELLIS (O.A.)

MISSED APPROACH:
Climb to 900 then
climbing left turn to
2100 direct CUAL
and hold.

UNICOM
122.95

SE-2, 03 DEC 2020 to 31 DEC 2020