

NDB LKR

400

APP CRS

251°

Rwy Idg

6004

TDZE

486

Apt Elev

486

LANCASTER COUNTY-MC WHIRTER FIELD (LKR)

NDB RWY 24

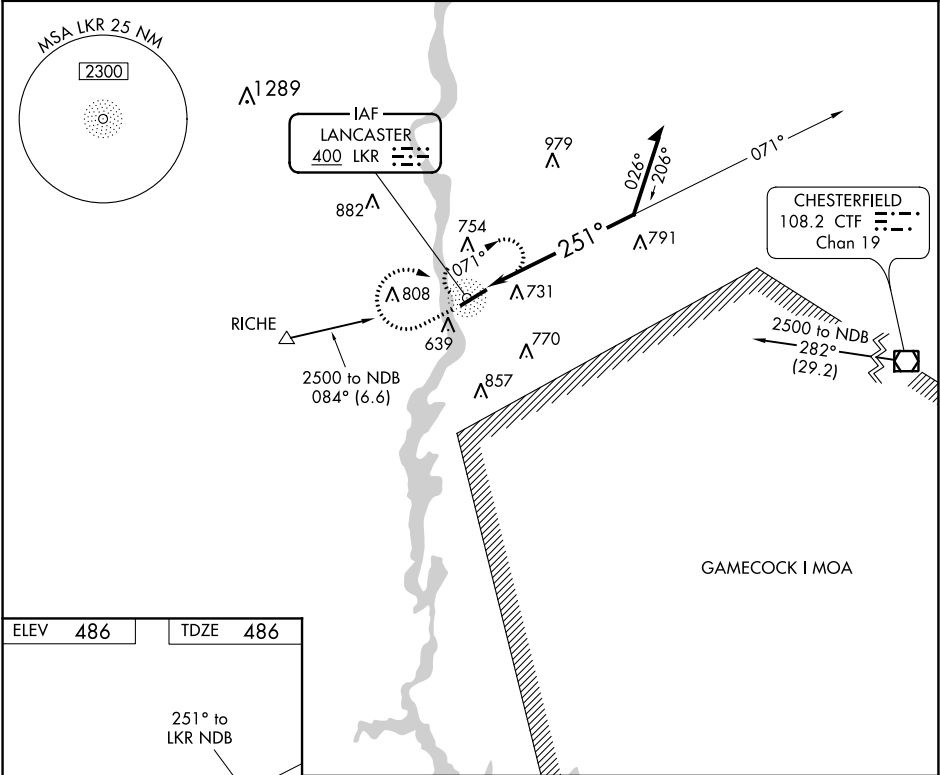
▼

NA

When VGSI inoperative, Straight-in/Circling Rwy 24 procedure NA at night. Visibility reduction by helicopters NA. When local altimeter setting not received, use Rock Hill altimeter setting and increase all MDA 80 feet, and increase S-24 Cats B, C, and D and Circling Cats B, C, and D visibility ¼ mile.

MISSED APPROACH: Climb to 2500 then right turn direct LKR NDB and hold.

AWOS-3 120.825	CHARLOTTE APP CON 120.05 307.8	GCO 121.725	UNICOM 122.725 (CTAF) 0
-------------------	-----------------------------------	----------------	----------------------------



ELEV 486

TDZE 486

251° to LKR NDB

6004 X 101

0.4% UP

2500

LKR

LKR NDB

Remain within 10 NM

CATEGORY	A	B	C	D
S-24	1160-1 674 (700-1)	1160-2 674 (700-2)	1160-2 674 (700-2)	1160-2 674 (700-2)
CIRCLING	1160-1 674 (700-1)	1160-2 674 (700-2)	1160-2 674 (700-2)	1160-2 674 (700-2)