

WAAS
CH **53720**
W06A

APP CRS
060°

Rwy Idg **5002**
TDZE **142**
Apt Elev **144**

RNAV (GPS) RWY 6

CLINTON-SAMPSON COUNTY (CT'Z)

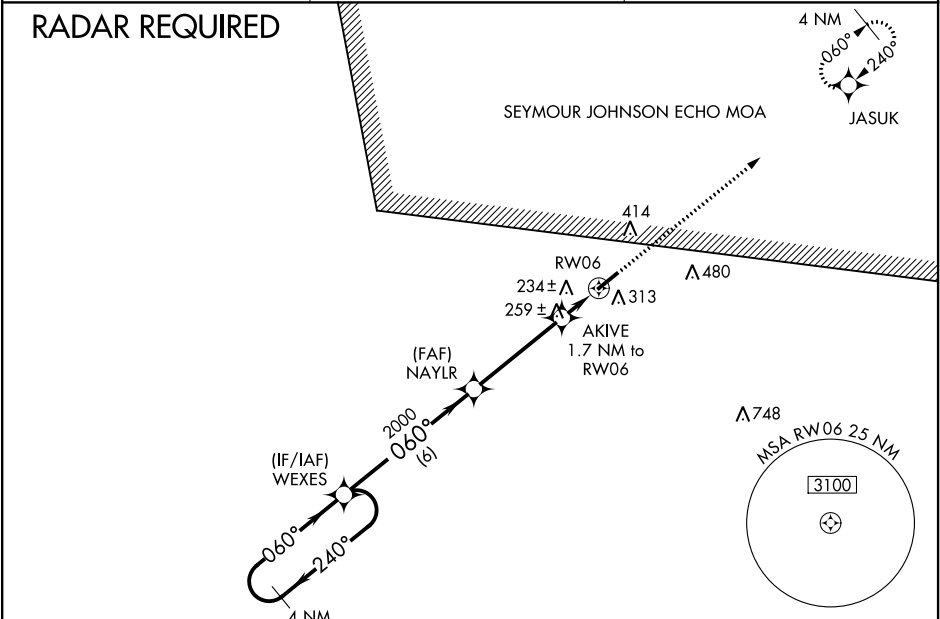
▼

▲

Baro-VNAV NA when using Kenansville altimeter setting. For uncompensated Baro-VNAV systems, LNAV/VNAV NA below -15°C (5°F) or above 43°C (109°F). DME/DME RNP-0.3 NA. VDP NA with Kenansville altimeter setting. When local altimeter setting not received, use Kenansville altimeter setting and increase all DA 45 feet and all MDA 60 feet and increase LNAV/VNAV all Cats visibility 1/8 mile, LNAV Cats C/D and Circling Cats C/D visibility 1/4 mile. Rwy 24 helicopter visibility reduction below 1 SM NA. Circling Rwy 24 NA at night.

MISSED APPROACH:
Climb to 2500 direct JASUK and hold.

AWOS-3 119.125	FAYETTEVILLE APP CON 133.0 290.25	UNICOM 122.8 (CTAF)
--------------------------	---	-------------------------------



ELEV **144**

TDZE **142**

4 NM Holding Pattern

2500

GP 3.00° TCH 39

WEXES

2000

NAYLR

2000

AKIVE 1.7 NM to RW06

700

RW06

144

2500

JASUK

*1.1 NM to RW06

*1.1 NM to RW06

*LNAV only.

CATEGORY	A	B	C	D
LPV DA		342-3/4	200 (200-3/4)	
LNAV/ VNAV DA		545-1 3/8	403 (500-1 3/8)	
LNAV MDA	520-1	378 (400-1)	520-1 1/8	378 (400-1 1/8)
CIRCLING	680-1	536 (600-1)	780-1 3/4 636 (700-1 3/4)	780-2 636 (700-2)

060° to RW06

060° to RW06

060° to RW06

060° to RW06

MIRL Rwy 6-24

REIL Rws 6 and 24